

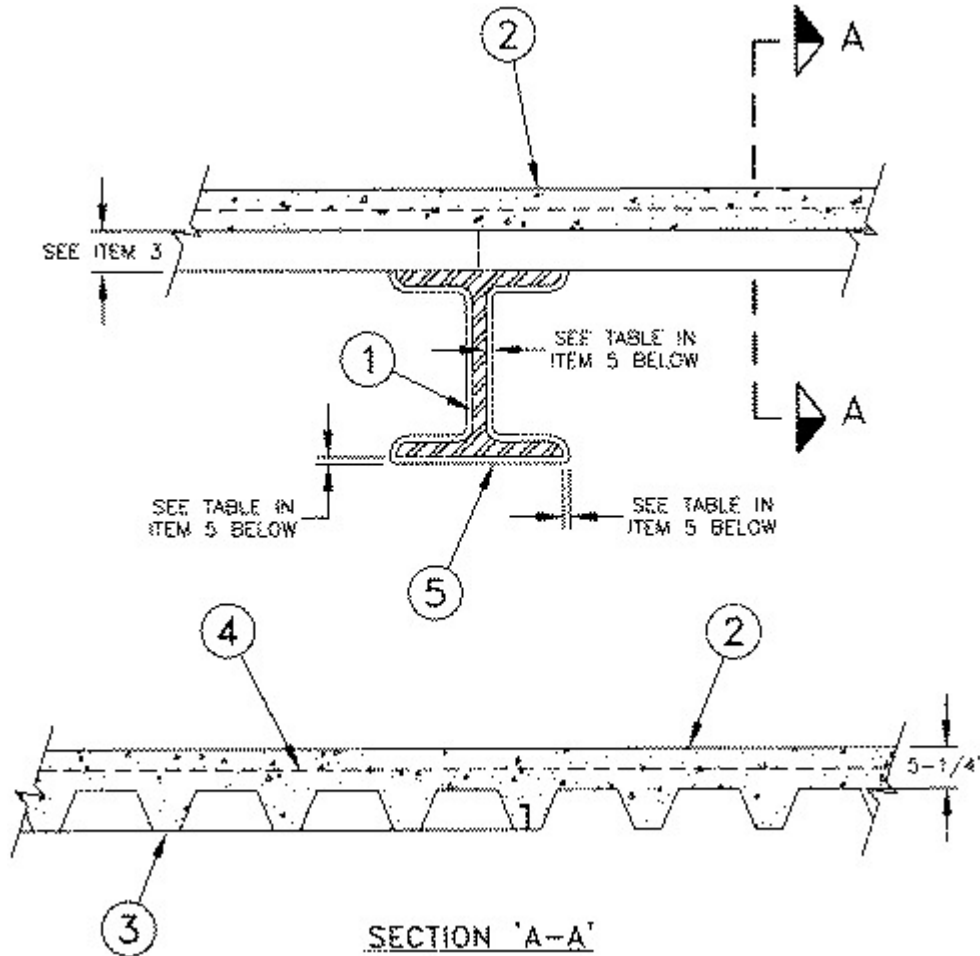
# UL Design No. D941

December 06, 2005

**Restrained Assembly Ratings-2 Hr. (See Item 5)**

**Unrestrained Assembly Ratings-0 Hr. (See Item 3)**

**Unrestrained Beam Ratings- 2, 1-1/2 Hr. (See Item 5)**



**1. Steel beam** — Any wide flange steel size shown in table in Item 5. Beam shall be primed with metal Alkyd Primer.

**2. Normal Weight Concrete** — Normal-density concrete, carbonate aggregate, 150 pcf unit weight 3600 psi compressive strength.

**3. Steel Floor and Form Units\*** — Composite or noncomposite, 3 in. deep, 20 MSG fluted or 20/20 MSG cellular, galv units. All fluted or alternating one 36 in. or 24 in. wide fluted to one 24 in. wide max cellular section. Welded to supports not over 12 in. OC. Adjacent units welded or crimped together along side laps 16 in. OC. When the maximum clear span of the Steel Floor and Form Units is less than or equal to the tested span of 5 ft. 9 in., the unrestrained assembly rating is increased to 1-1/2 Hr. or 2 Hr. to match the unrestrained beam rating.

**DECK WEST INC** — 36 in. wide Type 3-DW.

**H H ROBERTSON** — Type QL-99, QL-WKX

**VULCRAFT, DIV OF NUCOR CORP** — 24 or 36 in. wide Types 3VLI and 3VLP.  
Phos/ptd Type 3VLI units.

**WHEELING-PITTSBURGH STEEL CORP, DIV**

**OF WHEELING CORRUGATING CO** — Type P31LF.

4. **Welded Wire Fabric** — 6 x 6 - W1.4 x W1.4.

5. **Mastic Coating\*** — Mastic coating spray or brush applied in accordance with manufacturer's instructions to the minimum dry film thicknesses shown below:

<b>Minimum Beam Size, (W/D)</b>	<b>Restrained Assembly Rating, Hr.</b>	<b>Unrestrained Assembly Rating, Hr.</b>	<b>Unrestrained Beam Rating, Hr.</b>	<b>Min Dry Thickness of A/D Firefilm II or III on Beam, in.</b>
W8 x 31 (0.80)	2	0 (see Item 3)	1-1/2	0.089
W6 x 25 (0.84)	2	0 (see Item 3)	2	0.100

**A/D FIRE PROTECTION SYSTEMS INC** — Types "A/D FIREFILM II" and "A/D FIREFILM III" investigated for Conditioned Interior Space Purpose and Interior General Purpose

6. **Shear Connectors** — (optional) (not shown)— Studs 3/4 in. diam by 6 in. long, headed type, or equivalent per A.I.S.C specifications. Welded to top flange of the beam through the deck.

7. **Top Coat** — (not shown)—Finishing topcoat type "A/D Colorcoat" silicone alkyd paint applied at an approximate 0.002 in. dry film.

\*Bearing the UL Classification Mark