

## UL Online Certifications Directory

### BXUV.S739 Fire Resistance Ratings - ANSI/UL 263

[Page Bottom](#)

### Fire Resistance Ratings - ANSI/UL 263

[See General Information for Fire Resistance Ratings - ANSI/UL 263](#)

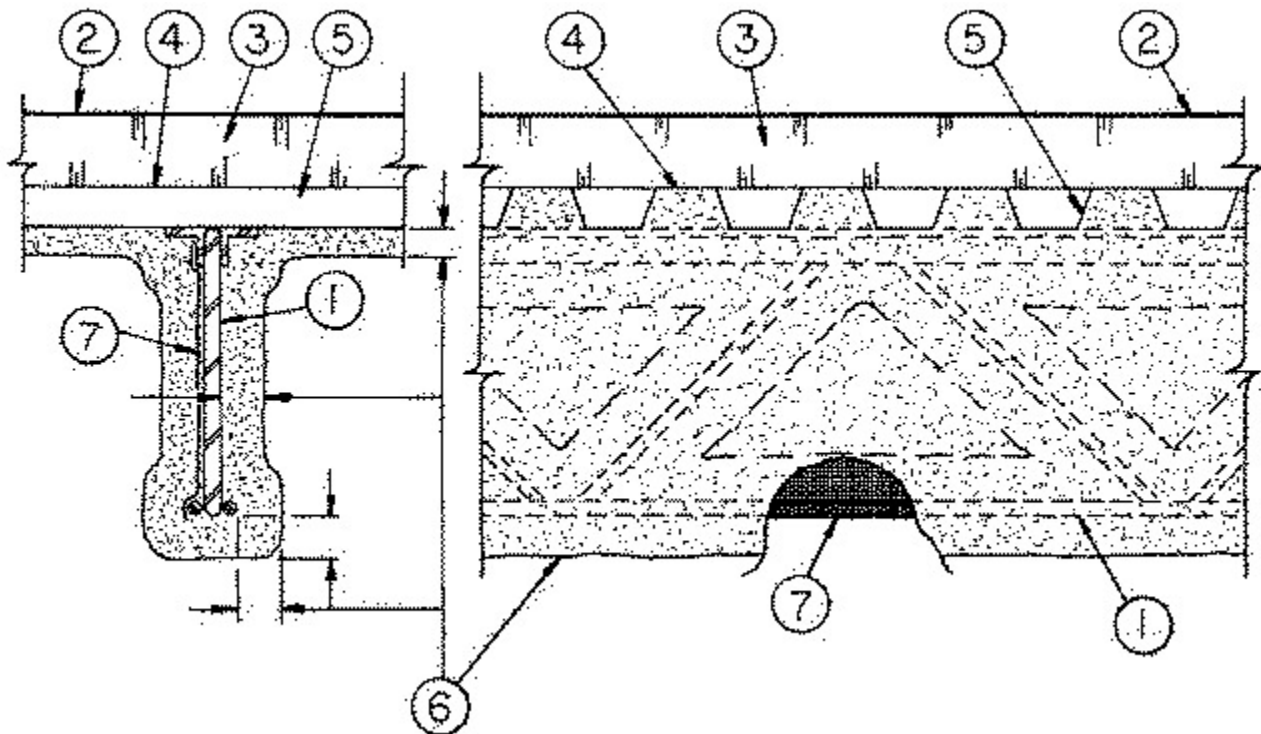
**Design No. S739**

January 13, 2006

**Restrained Beam Ratings — 1, 1-1/2, 2 or 3 Hr (See Item 6)**

**Unrestrained Beam Ratings — 1, 1-1/2, 2 or 3 Hr (See Item 6)**

**Load Restricted for Canadian Applications — See Guide [BXUV7](#)**



1. **Steel Supports** — 10K1 min size steel joists.
2. **Roof Covering\*** — Consisting of hot mopped, cold application or single-ply materials, compatible with insulation(s) described herein which provide Class A, B or C coverings. See Roofing Materials and Systems Directory-Roof Covering Materials (TEVT).
3. **Roof Insulation\*** — Consisting of building units, foamed plastic or mineral and fiber boards, applied in one or more layers. When multiple layers are used, end and side joints shall be offset a min of 12 in. in both directions in order to lap all joints. See category for names of companies providing Classified products — Building Units (BZXX), Foamed Plastic (CCVW) or Mineral and Fiber Boards (CERZ). Roof insulation shall be compatible with roof covering materials Class A, B or C system. See Roofing Materials and Systems Directory-Roof Covering Materials (TEVT).
4. **Adhesive** — (Optional) — May be applied to steel roof deck units or between insulation layers at a max application rate of 0.4 gal per 100 sq ft. See **Adhesives** (BYWR) category for names of manufacturers.
5. **Steel Roof Deck** — (Unclassified) — Fluted, No. 22 MSG min galv 1-1/2 in. deep with 3-1/2 in. wide flutes spaced 6 in. OC. Ends overlapped a min 1-1/2 in. and welded to supports, 12 in. OC max. Adjacent units button-punched, welded or fastened with No. 12 by 1/2 in. long self-drilling, self-tapping steel screws.

**6. Spray-Applied Fire Resistive Materials\*** — Applied by mixing with water and spraying to the joist and deck surfaces in one or more coats to the final min thicknesses shown below. Crest areas above the joist shall be filled with the Spray-Applied Fire Resistive Materials. Surfaces must be clean and free of dirt, loose scale and oil. Steel deck surfaces must be "spatter" coated with Type DK Spray Applied Fire Resistive Materials applied in accordance with manufacturer's application instructions. Min avg and min ind density of 17/16 pcf respectively. Min avg and min ind density of 19/18 pcf respectively for Types 7GP and 7HD. For method of density determination, see Design Information Section.

Joist Thickness on Bare Deck				
Restrained Beam Rating	Unrestrained Beam Rating	On 10K1 Joist	On 10K1 Joist @ 4 ft. or less OC	
1	1	3/4	3/4	
1 1/2	1	1 3/8	1 3/8	
1 1/2	1 1/2	1 7/16	1 3/8	
2	1	2 1/16	2 1/16	
2	2	2 1/8	2 1/16	
3	3	3 11/16	3 3/8	
Joist and Deck Thickness for Sprayed Deck Assemblies				
Restrained Beam Rating	Unrestrained Beam Rating	On Deck	On 10K1 Joist	On 10K1 Joist @ 4 ft. or less OC
1	1	3/8	3/4	9/16
1 1/2	1	9/16	13/16	13/16
1 1/2	1 1/2	9/16	1 3/16	15/16
2	1	1 1/8	1 5/16	1 1/4
2	2	1 1/8	1 5/8	1 1/4
3	3	2 3/16	2 9/16	2

**SOUTHWEST FIREPROOFING PRODUCTS CO** — Types 4, 5, 5EF, 5GP, 5MD, 7GP, 7HD, 8EF, 8GP, 8MD, 9EF, 9GP, 9MD.

**7. Glass Fiber Mesh** — (Optional) — Min 1/8 in. square mesh, coated fiberglass scrim fabric, weighing a min of 1.9 oz per sq yd shall be attached to one side of each joist web member. The method of attachment must be sufficient to hold the mesh and Spray-Applied Fire Resistive Materials during application and curing of the material. An acceptable method of attaching the mesh is by embedding the mesh in min 1/4 in. long beads of hot melted glue. The beads of glue shall be spaced min 12 in. OC along the top chord of the bar joists. Another method to secure the mesh is by 1-1/4 in. long by 1/2 in. wide hairpin clips formed from No. 18 SWG or heavier steel wire.

**8. Metal Lath** — (Optional-Not shown) — Diamond mesh, 3/8 in. expanded steel, min 1.7 lb per sq yd fastened to one side of joists using No. 18 SWG steel tie wire, located at the midheight of every other web member or 18 in. O.C. whichever is less. Both sides of lath must be completely coated with Spray-Applied Fire Resistive Materials.

\*Bearing the UL Classification Mark

Last Updated on 2006-01-13

[Questions?](#)

[Notice of Disclaimer](#)

[Page Top](#)

Copyright © 2006 Underwriters Laboratories Inc.®

The appearance of a company's name or product in this database does not in itself assure that products so identified have been manufactured under UL's Follow-Up Service. Only those products bearing the UL Mark should be considered to be Listed and covered under UL's Follow-Up Service. Always look for the Mark on the product.

UL permits the reproduction of the material contained in the Online Certification Directory subject to the following conditions: 1. The Guide Information, Designs and/or Listings (files) must be presented in their entirety and in a non-misleading manner, without any manipulation of the data (or drawings). 2. The statement "Reprinted from the Online Certifications Directory with permission from Underwriters Laboratories Inc." must appear adjacent to the extracted material. In addition, the reprinted material must include a copyright notice in the following format: "Copyright © 2006 Underwriters Laboratories Inc.®"

An independent organization working for a safer world with integrity, precision and knowledge.

