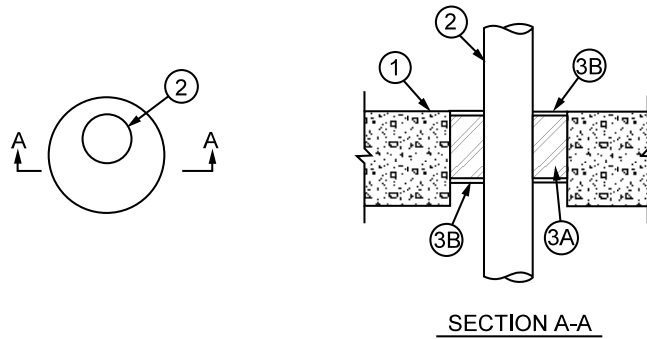


**FIRE STOP DESIGN 236**  
Rating – 1 HR



1. FLOOR OR WALL. Min 4½ in. (114 mm) thick normal weight concrete floor or wall, or min nominal 8 in. (200 mm) thick concrete block wall. Max nominal 6 in. (152 mm) dia. opening.
2. METALLIC PIPES. The following types may be used. Maintain min distance of 1 in. (25 mm) between pipe and opening.
  - A. Copper Pipe. Nominal 3 in. (76 mm) dia. (or smaller) with a wall thickness of 0.065 in. (1.65 mm).
  - B. Steel Pipe. Nominal 3 in. (76 mm) dia. (or smaller) Schedule 40 pipe.
3. FIRE STOP COMPONENTS.
  - A. Fill Material. Mineral fiber of nominal 4.0 pcf (64 kg/m<sup>3</sup>) density. Install to a min depth of 4 in. (102 mm). Compress material 33% min over width of opening. Surface recessed 3/16 in. (5 mm) min from surface of floor or both surfaces of a wall.

**A/D Fire Protection Systems Inc 420 Tapscott Rd Scarborough Ontario M1B 1Y4**

A/D Firebarrier Mineral Wool.

- B. Fill Material. Silicone fill material installed into opening to a min depth of 3/16 in. (5 mm) over mineral wool at each side of opening in wall and trowel surface smooth. Silicone fill is applied only at the top surface of a floor installation.

**A/D Fire Protection Systems Inc 420 Tapscott Rd Scarborough Ontario M1B 1Y4**

A/D Firebarrier Silicone (for floor and wall installations).

A/D Firebarrier Silicone SL (for floor installations at top surface only).