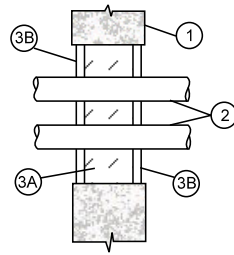
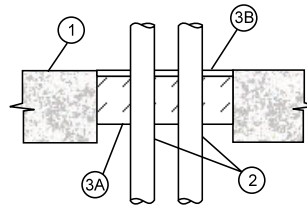


**FIRE STOP DESIGN 83**  
**Rating – 2 and 1 HR (See No. 2)**



Wall Installation



Floor Installation

1. FLOOR OR WALL. Min 6 in. (152 mm) thick normal weight concrete floor or wall, or min nominal 8 in. (203 mm) thick concrete block wall of min 2 hour fire resistant rating. Max area of opening not to exceed 52 in.<sup>2</sup> (0.034 m<sup>2</sup>), max dimension 11 in. (279 mm).
2. METALLIC PIPES. The following types may be used. Maintain min distance of ½ in. (13 mm) between pipe and opening, and 2 in. (51 mm) between pipes. When copper pipe is used, the rating is 1 hour.
  - a. Steel Pipe. Nominal 2 in. (51 mm) dia. (or smaller) Schedule 40 pipe.
  - b. Copper Pipe. Nominal 2 in. (51 mm) dia. (or smaller) with a wall thickness of 0.061 in. (1.55 mm).
3. FIRE STOP COMPONENTS.
  - a. Fill Material. Mineral fiber of nominal 4.0 pcf (64 kg/m<sup>3</sup>) density. Cut to fit length of opening and install to a min depth of 4 in. (102 mm). Compress material min 33% over width of opening. Surface recessed ½ in. (13 mm) min from surface of floor or wall.

**A/D Fire Protection Systems Inc 420 Tapscott Rd Scarborough Ontario M1B 1Y4**

A/D Firebarrier Mineral Wool.

- b. Fill Material. Silicone fill material installed within opening to a min depth of ½ in. (13 mm) over mineral wool; surface troweled smooth. For vertical separations, apply a min depth of ½ in. (13 mm) on each of side of seal.

**A/D Fire Protection Systems Inc 420 Tapscott Rd Scarborough Ontario M1B 1Y4**

A/D Firebarrier Silicone (for floor or wall installations).  
A/D Firebarrier Silicone SL (for floor installations only).