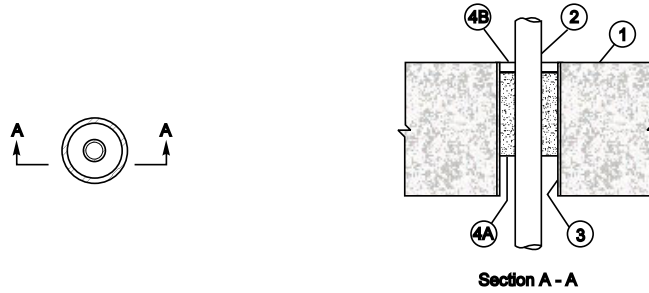


**FIRE STOP DESIGN 93**  
 Rating – 1½ and 3 HR (See No. 5)



1. FLOOR OR WALL. Min 4 in. (114 mm) thick normal weight concrete floor or wall, or min nominal 8 in. (203 mm) thick concrete block wall of min 3 hour fire resistant rating (see No. 5 below). Nominal 3 in. (76 mm) dia. opening.
2. STEEL PIPE SLEEVE (Optional). Nominal 3 in. (76 mm) dia. Schedule 40 steel pipe sleeve, cast in place.
3. STEEL CONDUIT OR PIPE. Nominal 1¼ in. (32 mm) dia. or smaller rigid galvanized steel conduit or equivalent steel pipe. Maintain min distance of ¾ in. (19 mm) between pipe and opening.
4. FIRE STOP COMPONENTS.
  - a. Fill Material. Mineral fiber of nominal 4.0 pcf (64 kg/m<sup>3</sup>) density. Install to a min depth of 4 in. (102 mm). Compress material min 33% over width of opening. Surface recessed 7/32 in. (5 mm) min from surface of floor.

**A/D Fire Protection Systems Inc 420 Tapscott Rd Scarborough Ontario M1B 1Y4**

A/D Firebarrier Mineral Wool.

- b. Fill Material. Sealant installed within opening to a min depth of 7/32 in. (5 mm) wet thickness over the mineral wool at each side of the opening in a wall and trowel surface smooth. Sealant is applied only at the top surface of a floor installation.

**A/D Fire Protection Systems Inc 420 Tapscott Rd Scarborough Ontario M1B 1Y4**

A/D Firebarrier Seal.

5. HOURLY RATING. The hourly rating depends upon the thickness of the floor or wall as shown below:

| <i>Thickness, in.</i><br><i>(mm)</i> | <i>Rating (hrs)</i> |
|--------------------------------------|---------------------|
| 4<br>(102)                           | 1½                  |
| 7<br>(178)                           | 3                   |