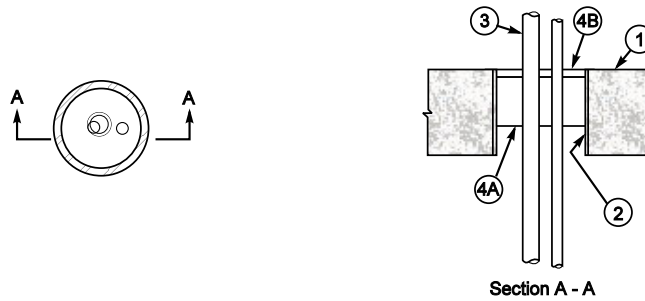


### FIRE STOP DESIGN 95

Rating – 3 HR



1. FLOOR. Min 7 in. (178 mm) thick normal weight concrete. Nominal 9 in. (229 mm) dia. opening.
2. PVC PIPE SLEEVE (Optional). Nominal 9 in. (229 mm) dia. PVC pipe sleeve with wall thickness of 0.47 in. (12 mm), cast in place.
3. COPPER PIPES. Nominal 1/2 in. (13 mm) dia. (or smaller) with a wall thickness of 0.017 in. (0.43 mm). Max of two pipes. Maintain min distance of 1 5/16 in. (36 mm) between pipes, and 2 3/4 in. (70 mm) between pipe and opening.
4. FIRE STOP COMPONENTS.
  - a. Fill Material. Mineral fiber of nominal 4.0 pcf (64 kg/m<sup>3</sup>) density. Install to a min depth of 4 in. (102 mm). Compress material min 33% over width of opening. Surface recessed 7/32 in. (5 mm) min from surface of floor.

**A/D Fire Protection Systems Inc 420 Tapscott Rd Scarborough Ontario M1B 1Y4**

A/D Firebarrier Mineral Wool.

- b. Fill Material. Sealant installed within opening to a min depth of 7/32 in. (5 mm) over mineral wool; surface troweled smooth.

**A/D Fire Protection Systems Inc 420 Tapscott Rd Scarborough Ontario M1B 1Y4**

A/D Firebarrier Seal.