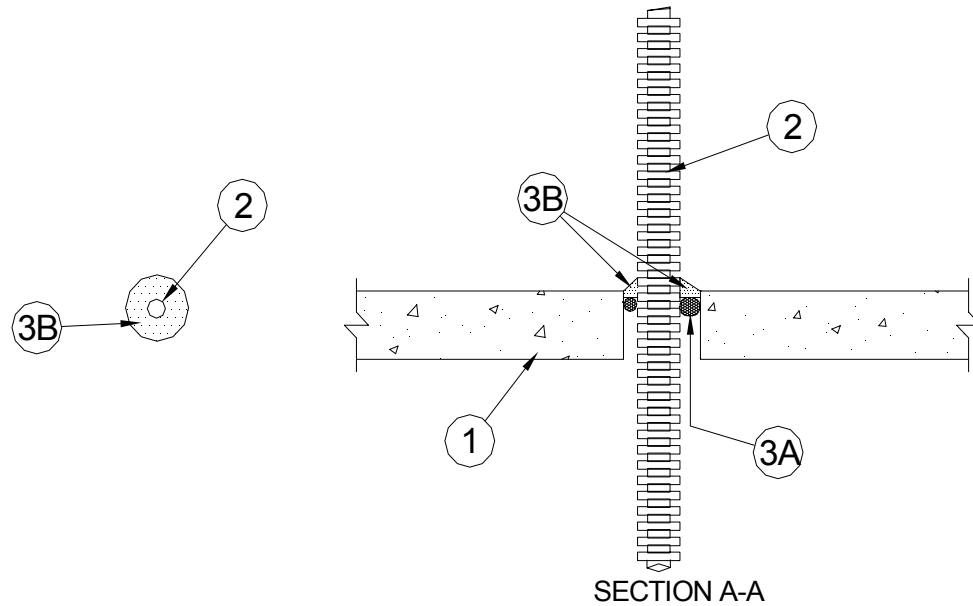


Through-penetration Firestop Systems
UL System No. C-AJ-2582
F Ratings - 2 Hr
T Ratings - 1-1/2 & 1-3/4 Hr (See Item 2)



- 1. Floor or Wall Assembly** - Min. 4-1/2 in. (114 mm) thick reinforced lightweight or normal weight (100-150 pcf (1600-2400 kg/m³)) concrete. Floor may also be constructed of any min. 6 in. (152 mm) thick UL Classified hollow-core **Precast Concrete Units***. Wall may also be constructed of any UL Classified **Concrete Blocks***. Max. dia. of opening is 2 in. (51 mm).

See **Concrete Blocks (CAZT)** and **Precast Concrete Units (CFTV)** categories in the Fire Resistance Directory for names of manufacturers.

- 2. Through Penetrants** - One nonmetallic tube to be installed either concentrically or eccentrically within the firestop system. The annular space shall be min. 1/4 in. (6 mm) to max. 7/16 in. (11 mm) Tube to be rigidly supported on both sides of wall assembly. The following types and sizes of nonmetallic tubes may be used:
 - A. Crosslinked Polyethylene (PEX) Tube** - Nom. 3/4 in. (19 mm) dia. (or smaller) SDR 9 PEX tubing for use in closed (process or supply) piping systems.
 - B. Electrical Nonmetallic Tubing+** - Nom. 1 in. (25 mm) dia. (or smaller) corrugated wall electrical nonmetallic tubing (ENT) constructed of polyvinyl chloride. ENT to be installed as a complete system with all terminations in junction boxes, outlet boxes or other approved enclosures as specified in the National Electric Code.

See **Electrical Nonmetallic Tubing (FKHU)** category in the Electrical Construction Materials Directory for names of manufacturers.

The hourly T Rating of the firestop system is dependent upon the type of tubing used. If PEX is used, the T Rating is 1-1/2 hr. If ENT is used, the T Rating is 1-3/4 hr.

UL System C-AJ-2582 continued...

3. **Firestop System** - The firestop system shall consist of the following:

- A. **Packing Material** - (Optional) - Foam backer rod firmly packed into opening as a permanent form. Packing material to be recessed from top surface of floor or from both surfaces of wall and hollow-core precast concrete units as required to accommodate the required thickness of fill material.
- B. **Fill, Void or Cavity Material*- Caulk** - Min. 1/2 in. (13 mm) thickness of fill material applied within the annulus, flush with top surface of floor or with both surfaces of wall and hollow-core precast concrete units. Additional fill material to be installed such that a min 1/4 in. (6 mm) crown is formed around the penetrating item.

A/D FIRE PROTECTION SYSTEMS INC - A/D FIREBARRIER Intumescent Sealant

*Bearing the UL Classification Mark