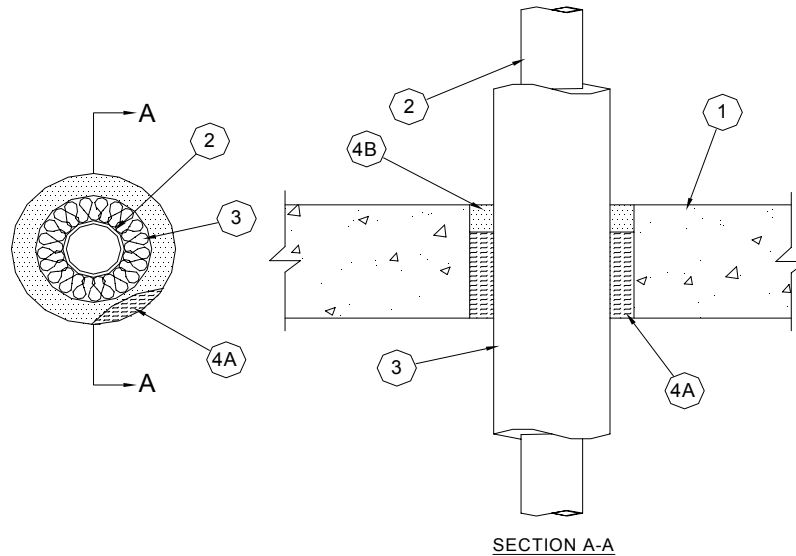


Through-penetration Firestop Systems
UL System No. C-AJ-5306
F Rating - 2 Hr
T Rating - 1-1/4 Hr



1. **Floor or Wall Assembly** - Min. 4-1/2 in. (114 mm) thick reinforced lightweight or normal weight (100-150 pcf (1600-2400 kg/m³)) concrete. Wall may also be constructed of any UL Classified **Concrete Blocks***. Max dia. of opening is 6 in. (152 mm).

See **Concrete Blocks** (CAZT) category in the Fire Resistance Directory for names of manufacturers.

2. **Through Penetrants** - One nonmetallic pipe to be installed concentrically within the firestop system. Pipe to be rigidly supported on both sides of floor or wall assembly. The following types and sizes of nonmetallic pipes may be used:

A. **Polyvinyl Chloride (PVC) Pipe** - Nom. 2 in. (51 mm) dia. (or smaller) Schedule 40 solid core PVC pipe for use in closed (process or supply) or vented (drain, waste or vent) piping systems.

B. **Chlorinated Polyvinyl Chloride (CPVC) Pipe** - Nom. 2 in. (51 mm) dia. (or smaller) SDR 13.5 CPVC pipe for use in closed (process or supply) or vented (drain, waste or vent) piping systems.

3. **Pipe Covering*** - Nom. 1 in. (25 mm) thick hollow cylindrical heavy density (min 3.5 pcf (56 kg/m³)) glass fiber units jacketed on the outside with an all service jacket. Longitudinal joints sealed with metal fasteners or factory-applied self-sealing lap tape. Transverse joints secured with metal fasteners or with butt tape supplied with the product. The annular space between insulated pipe and periphery of opening shall be 7/8 in. (22 mm).

See **Pipe and Equipment Covering Materials (BRGU)** category in the Building Materials Directory for names of manufacturers. Any pipe covering material meeting the above specifications and bearing the UL Classification Marking with a Flame Spread Index of 25 or less and a Smoke Developed Index of 50 or less may be used.

4. **Firestop System** - The firestop system shall consist of the following:

A. **Packing Material** - Min. 3-1/2 in. (89 mm) depth of 4 pcf (64 kg/m³) mineral wool batt insulation tightly packed into the annular space, recessed 1 in. (25 mm) from top surface of floor or both surfaces of wall to accommodate fill material.

B. **Fill, Void or Cavity Material* - Caulk** - Min. 1 in. (25 mm) thickness of fill material applied within the annulus flush with top surface of floor or both surfaces of wall.

A/D FIRE PROTECTION SYSTEMS INC - A/D FIREBARRIER Intumescent Sealant

*Bearing the UL Classification Mark