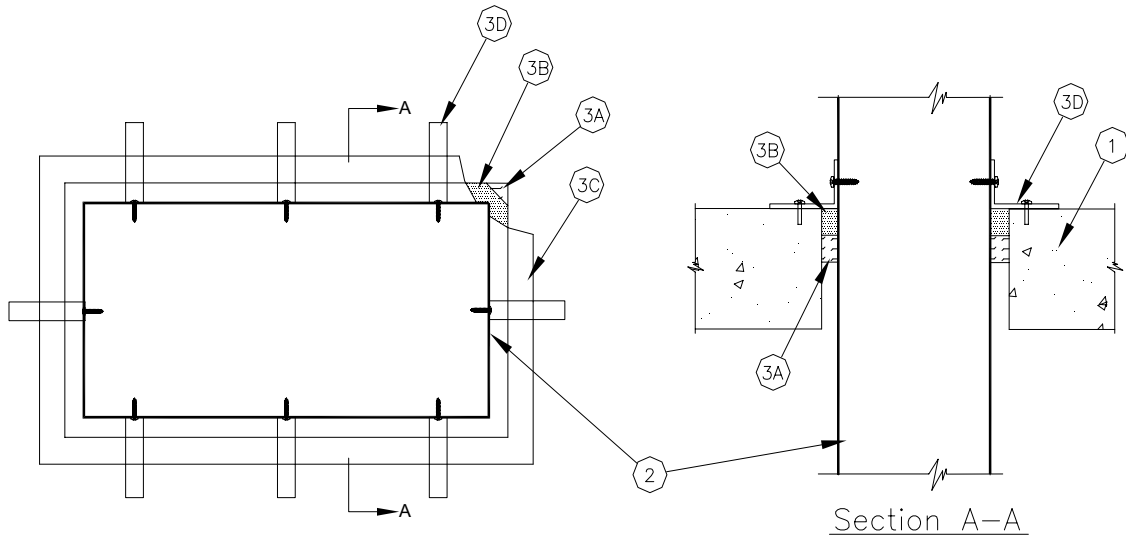


Through-penetration Firestop Systems
UL System No. C-AJ-7125
F Rating - 2 Hr
T Rating - 0 Hr



1. **Floor or Wall Assembly** - Min. 4-1/2 in. (114 mm) thick reinforced lightweight or normal weight (100-150 pcf (1600-2400 kg/m³)) concrete. Wall may also be constructed of any UL Classified **Concrete Blocks***. Max. area of opening is 160 sq in. (1030 sq cm) with max. dimension of 20 in. (508 mm).

See **Concrete Blocks** (CAZT) category in the Fire Resistance Directory for names of manufacturers.

2. **Steel Duct** - Nom. 18 by 6 in. (457 by 152 mm) (or smaller) No. 28 gauge (or heavier) steel duct. One duct to be installed within the firestop system with a max. 1 in. (25 mm) annular space. Steel duct to be rigidly supported on both sides of floor or wall assembly.

3. **Firestop System** - The firestop system shall consist of the following:

- A. **Packing Material** - Min. 1 in. (25 mm) thickness of min. 4.0 pcf (64 kg/m³) mineral wool batt insulation firmly packed into opening as a permanent form. Packing material to be recessed from top surface of floor or from both surfaces of wall as required to accommodate the required thickness of fill material.

- B. **Fill, Void or Cavity Material* - Caulk** - Min. 1 in. (25 mm) thickness of fill material applied within the annulus, flush with top surface of floor or with both surfaces of wall.

A/D FIRE PROTECTION SYSTEMS INC - A/D FIREBARRIER Intumescent Sealant

- C. **Cover Plate** - Min. 28 gauge galv steel cut to fit the contour of the duct with a min. 1 in. (25 mm) lap on the top surface of the floor assembly (and both surfaces of wall assembly) around the perimeter of the steel duct. Steel cover plate installed in conjunction with steel angle clips described below.

- D. **Angle Clips** - Min. 3/4 in. (19 mm) wide angle clips having min. 3 in. (76 mm) legs, constructed of min. No. 12 gauge steel. Angle clips to be spaced max 6 in. (152 mm) OC with min one angle on each side of duct. Angle clips secured to duct with min two No. 8 by 3/4 in. (19 mm) sheet metal screws and to concrete slab using min 1/4 in. (6 mm) dia. by 1-1/2 in. (38 mm) long steel expansion bolts or equivalent in conjunction with steel nuts and washers.

*Bearing the UL Classification Mark