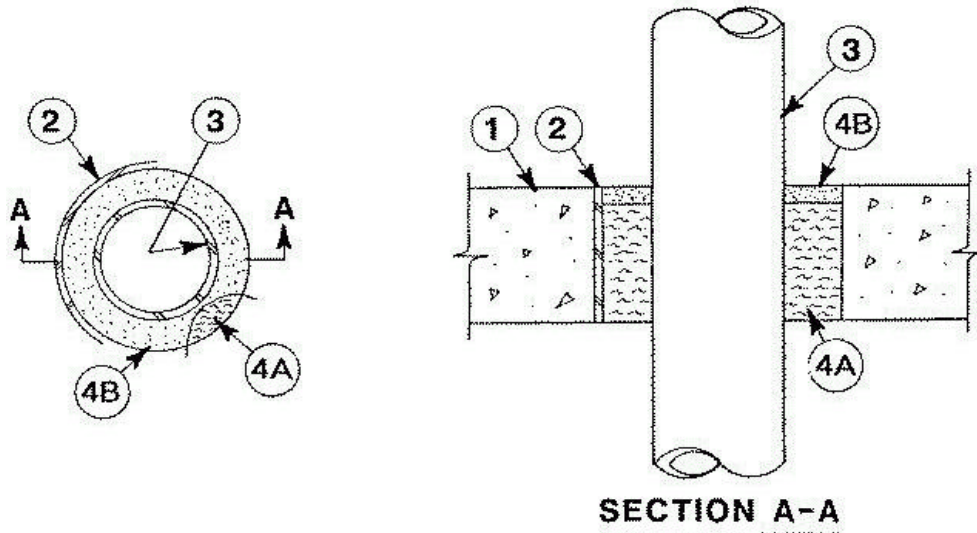


**UL System No. C-AJ-1116**  
December 06, 2001  
**(Formerly System No. 599)**  
**F Rating — 3 Hr**  
**T Rating — 0 Hr**



1. **Floor or Wall Assembly** Min 4-1/2 in. thick reinforced lightweight or normal weight (100-150 pcf) concrete. Floor may also be constructed of any min 6 in. thick UL Classified hollow-core **Precast Concrete Units\***. Wall may also be constructed of any UL Classified **Concrete Blocks\***. Max dia. of opening is 6-5/8 in.

See **Concrete Blocks (CAZT)** and **Precast Concrete Units (CFTV)** categories in the Fire Resistance Directory for names of manufacturers.

2. **Metallic Sleeve** (Optional) — Nom 6 in. dia. (or smaller) Schedule 40 steel pipe cast or grouted into floor or wall assembly, flush with floor or wall surfaces.

3. **Through Penetrants** One metallic pipe or tubing to be centered within the firestop system. Pipe or tubing to be rigidly supported on both sides of floor or wall assembly. The annular space within the firestop system shall be a nom 3/4 in. The following types and sizes of metallic pipes or tubing may be used:

A. **Steel Pipe** Nom 3 in. dia. (or smaller) Schedule 5 (or heavier) steel pipe.

B. **Iron Pipe** Nom 3 in. dia. (or smaller) cast or ductile iron pipe.

C. **Conduit** Nom 4 in. dia. (or smaller) steel electrical metallic tubing or steel conduit.

D. **Copper Tubing** Nom 3 in. dia. (or smaller) type L (or heavier) copper tubing.

E. **Copper Pipe** Nom 3 in. dia. (or smaller) Regular (or heavier) copper pipe.

**C-AJ-1116 continued...**

**4. Firestop System** The firestop system shall consist of the following:

**A. Packing Material** Min 4 in. thickness of min 4 pcf mineral wool batt insulation firmly packed into opening as a permanent form. Packing material to be recessed from top surface of floor or from both surfaces of wall as required to accommodate the required thickness of fill material. When the floor is constructed of hollow-core precast concrete units, packing material shall be recessed from both surfaces of floor to accommodate the required thickness of fill material.

**B. Fill, Void or Cavity Material\* — Caulk** Min 1/2 in. thickness of fill material applied within the annulus, flush with top surface of floor or with both surfaces of wall. When the floor is constructed of hollow-core precast concrete units, fill material shall be installed symmetrically on both sides of floor, flush with both floor surfaces.

**A/D FIRE PROTECTION SYSTEMS INC** — A/D Silicone Firebarrier Sealant [S/L (floors only) or G/G (floor, hollow-core precast concrete units or walls)].

\*Bearing the UL Classification Mark