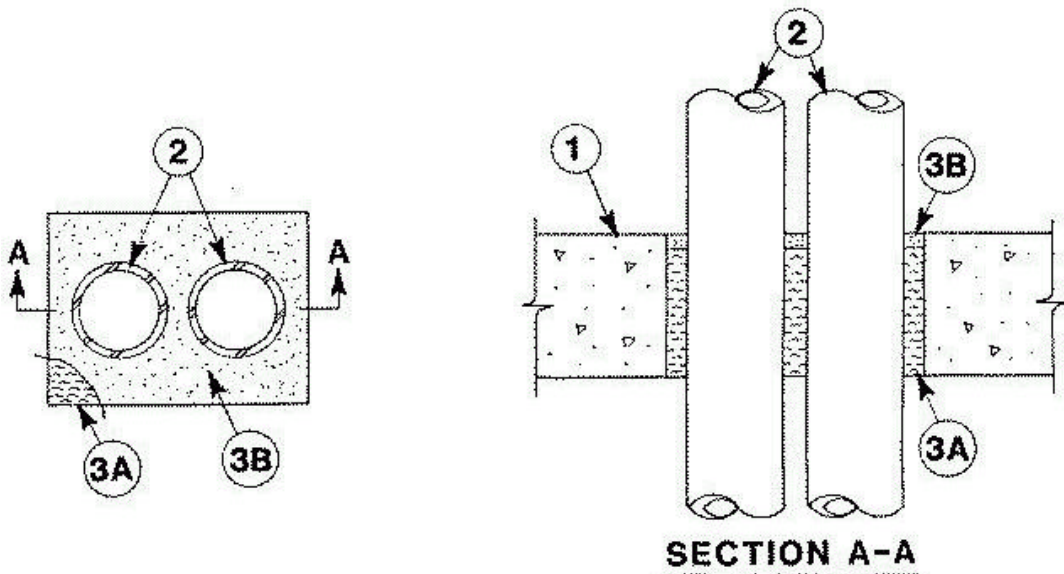


UL System No. C-AJ-1117
December 06, 2001
(Formerly System No. 602)
F Rating — 3 Hr
T Rating — 0 Hr



1. **Floor or Wall Assembly** Min 4-1/2 in. thick reinforced lightweight or normal weight (100-150 pcf) concrete. Floor may also be constructed of any min 6 in. thick UL Classified hollow-core **Precast Concrete Units***. Wall may also be constructed of any UL Classified **Concrete Blocks***. Max area of opening is 48 sq in. with max dimension of 8 in. If the firestop system is installed within a hollow-core precast concrete unit, max dimension of opening shall be 7 in.

See **Concrete Blocks (CAZT)** and **Precast Concrete Units (CFTV)** categories in the Fire Resistance Directory for names of manufacturers.

2. **Through Penetrants** A max of two pipes, conduit or tubing to be installed within the opening. The space between pipes, conduit or tubing shall be a nom 5/16 in. The space between pipes, conduit or tubing and periphery of opening shall be min 1/4 in. to max 1-1/4 in. Pipe, conduit or tubing to be rigidly supported on both sides of floor or wall. The following types and sizes of metallic pipes, conduits or tubing may be used:

- A. **Steel Pipe** Nom. 3 in. dia. (or smaller) Schedule 5 (or heavier) steel pipe.
- B. **Iron Pipe** Nom. 3 in. dia. (or smaller) cast or ductile iron pipe.
- C. **Conduit** Nom. 3 in. dia. (or smaller) steel electrical metallic tubing or rigid galv steel conduit.

C-AJ-1117 continued...

3. Firestop System The firestop system shall consist of the following:

A. Packing Material Min 4 in. thickness of min 4 pcf mineral wool batt insulation firmly packed into opening as a permanent form. Packing material to be recessed from top surface of floor or from both surfaces of wall as required to accommodate the required thickness of fill material. When the floor is constructed of hollow-core precast concrete units, packing material shall be recessed from both surfaces of floor to accommodate the required thickness of fill material.

B. Fill, Void or Cavity Material* — Sealant Min 1/2 in. thickness of fill material applied within the annulus, flush with top surface of floor or with both surfaces of wall. When the floor is constructed of hollow-core precast concrete units, fill material shall be installed symmetrically on both sides of floor, flush with both floor surfaces.

A/D FIRE PROTECTION SYSTEMS INC — A/D Silicone Firebarrier Sealant [S/L (floors only) or G/G (floor, hollow-core precast concrete units or walls)].

*Bearing the UL Classification Mark