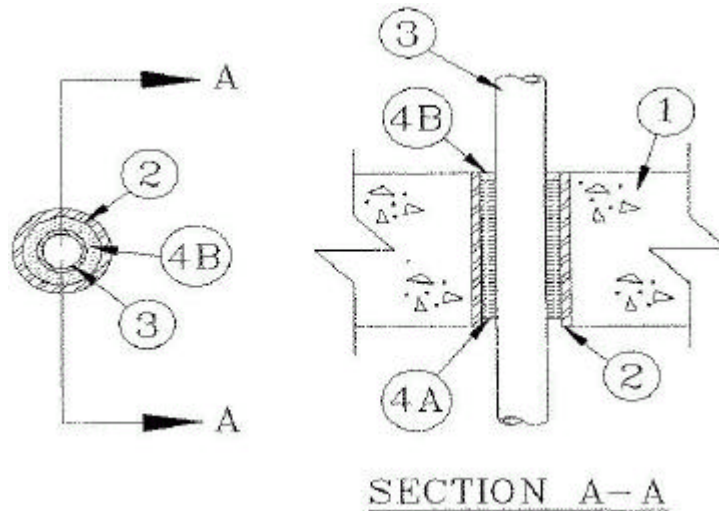


UL System No. C-AJ-1127
December 06, 2001
(Formerly System No. 625)
F Rating — 3 Hr



T Rating — 1/2 Hr

1. **Floor or Wall Assembly** Min 4-1/2 in. thick reinforced normal weight (140-150 pcf) concrete. Floor may also be constructed of any min 6 in. thick UL Classified hollow-core **Precast Concrete Units***. Wall may also be constructed of any UL Classified **Concrete Blocks***. Max dia. of opening is 2-1/2 in.

See **Concrete Blocks (CAZT)** and **Precast Concrete Units (CFTV)** categories in the Fire Resistance Directory for names of manufacturers.

2. **Metallic Sleeve** (Optional) Nom 2-1/2 in. dia. (or smaller) steel EMT, conduit or pipe cast or grouted into floor or wall assembly, flush with floor or wall surfaces.

3. **Through Penetrants** One metallic pipe, conduit or tubing to be centered within the firestop system. A nom annular space of 7/16 in. is required within the firestop system. Pipe, conduit or tubing to be rigidly supported on both sides of floor or wall assembly. The following types and sizes of metallic pipes, conduits or tubing may be used:

A. **Steel Pipe** Nom. 1-1/4 in. dia. (or smaller) Schedule 5 (or heavier) steel pipe.

B. **Conduit** Nom. 1-1/4 in. dia. (or smaller) steel electrical metallic tubing or steel conduit.

4. **Firestop System** The firestop system shall consist of the following:

A. **Packing Material** Nom. 4 in. thickness of min 4 pcf mineral wool batt insulation firmly packed into opening as a permanent form. Packing material to be recessed from top surface of floor or from both surfaces of wall as required to accommodate the required thickness of fill material. When the floor is constructed of hollow-core precast concrete units, packing material shall be recessed from both surfaces of floor to accommodate the required thickness of fill material.

C-AJ-1127 continued...

B. Fill, Void or Cavity Material* — Sealant Min. 200 mil (5 mm) wet thickness of fill material applied within the annulus, flush with top surface of floor or with both surfaces of wall. When the floor is constructed of hollow-core precast concrete units, fill material shall be installed symmetrically on both sides of floor, flush with both floor surfaces.

A/D FIRE PROTECTION SYSTEMS INC — A/D FireBarrier Seal (for floors only) and A/D FireBarrier Seal N/S (for hollow-core precast concrete units or walls only).

*Bearing the UL Classification Mark