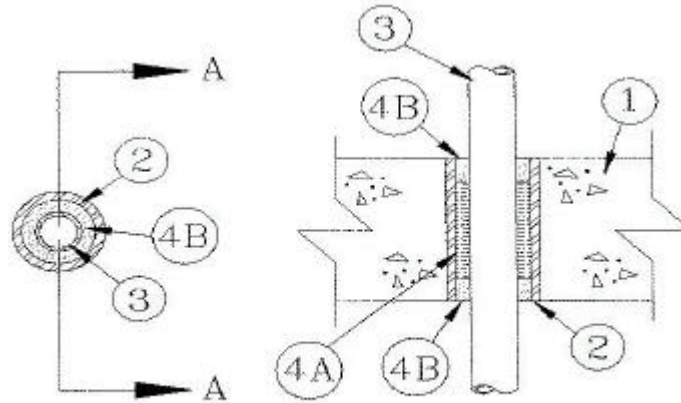


UL System No. C-AJ-1128
 December 06, 2001
(Formerly System No. 626)
F Rating — 3 Hr
T Rating — 3/4 Hr



SECTION A-A

1. **Floor or Wall Assembly** Min 4-1/2 in. thick reinforced normal weight (140-150 pcf) concrete. Floor may also be constructed of any min 6 in. thick UL Classified hollow-core **Precast Concrete Units***. Wall may also be constructed of any UL Classified **Concrete Blocks***. Max dia. of opening is 2-1/2 in.

See **Concrete Blocks (CAZT)** and **Precast Concrete Units (CFTV)** categories in the Fire Resistance Directory for names of manufacturers.

2. **Metallic Sleeve** (Optional) Nom 2-1/2 in. dia. (or smaller) steel EMT, conduit or pipe cast or grouted into floor or wall assembly, flush with floor or wall surfaces.

3. **Through Penetrants** One metallic pipe, conduit or tubing to be centered within the firestop system. A nom annular space of 7/16 in. is required within the firestop system. Pipe, conduit or tubing to be rigidly supported on both sides of floor or wall assembly. The following types and sizes of metallic pipes, conduits or tubing may be used:

A. **Steel Pipe** Nom 1-1/4 in. dia. (or smaller) Schedule 5 (or heavier) steel pipe.

B. **Conduit** Nom 1-1/4 in. dia. (or smaller) steel electrical metallic tubing or steel conduit.

4. **Firestop System** The firestop system shall consist of the following:

A. **Packing Material** Min 3 in. thickness of min 4 pcf mineral wool insulation firmly packed into opening as a permanent form. Packing material to be recessed from both surfaces of floor or wall as required to accommodate the required thickness of fill material.

B. **Fill, Void or Cavity Material* - Mortar** Min 3/4 in. thickness of fill material applied within the annulus, flush with both surfaces of floor or wall. Mortar to be mixed at a rate of 2.7 parts dry mixture to one part water in accordance with the installation instructions supplied with the product.

A/D FIRE PROTECTION SYSTEMS INC — A/D FireBarrier Mortar

*Bearing the UL Classification Mark