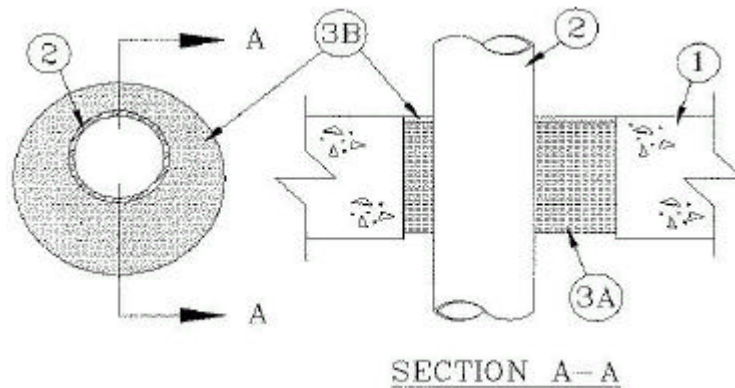


UL System No. C-AJ-1129
December 06, 2001
(Formerly System No. 627)
F Rating — 3 Hr
T Rating — 0 Hr



1. **Floor or Wall Assembly** Min 4-1/2 in. thick reinforced normal weight (140-150 pcf) concrete. Floor may also be constructed of any min 6 in. thick UL Classified hollow-core **Precast Concrete Units***. Wall may also be constructed of any UL Classified **Concrete Blocks***. Max dia. of opening is 7 in.

See **Concrete Blocks (CAZT)** and **Precast Concrete Units (CFTV)** categories in the Fire Resistance Directory for names of manufacturers.

2. **Through-Penetrants** One metallic pipe, conduit or tubing to be installed eccentrically within the firestop system. The annular space shall be a min 1 in. to a max of 2-7/8 in. Pipe, conduit or tubing to be rigidly supported on both sides of floor or wall assembly. The following types and sizes of metallic pipes, conduits or tubing may be used:

- A. **Steel Pipe** Nom. 3 in. dia. (or smaller) Schedule 5 (or heavier) steel pipe.
- B. **Conduit** Nom. 3 in. dia. (or smaller) steel electrical metallic tubing or steel conduit.
- C. **Copper Pipe** Nom. 3 in. dia. (or smaller) Regular (or heavier) copper pipe.
- D. **Copper Tubing** Nom. 3 in. dia. (or smaller) Type M (or heavier) copper tube.

3. **Firestop System** The firestop system shall consist of the following:

- A. **Packing Material** Min 4 in. thickness of min 4 pcf mineral wool batt insulation firmly packed into opening as a permanent form. Packing material to be recessed from top surface of floor or from both surfaces of wall as required to accommodate the required thickness of fill material. When the floor is constructed of hollow-core precast concrete units, packing material shall be recessed from both surfaces of floor to accommodate the required thickness of fill material.

C-AJ-1129 continued...

B. Fill, Void or Cavity Material* — Caulk Min. 1/4 in. thickness of fill material applied within the annulus, flush with the top surface of floor or both surfaces of wall. When the floor is constructed of hollow-core precast concrete units, fill material shall be installed symmetrically on both sides of floor, flush with both floor surfaces.

A/D FIRE PROTECTION SYSTEMS INC — A/D FireBarrier Silicone S/L (for floor only) and A/D FireBarrier Silicone (for floors, hollow-core precast concrete unit and walls)

*Bearing the UL Classification Mark