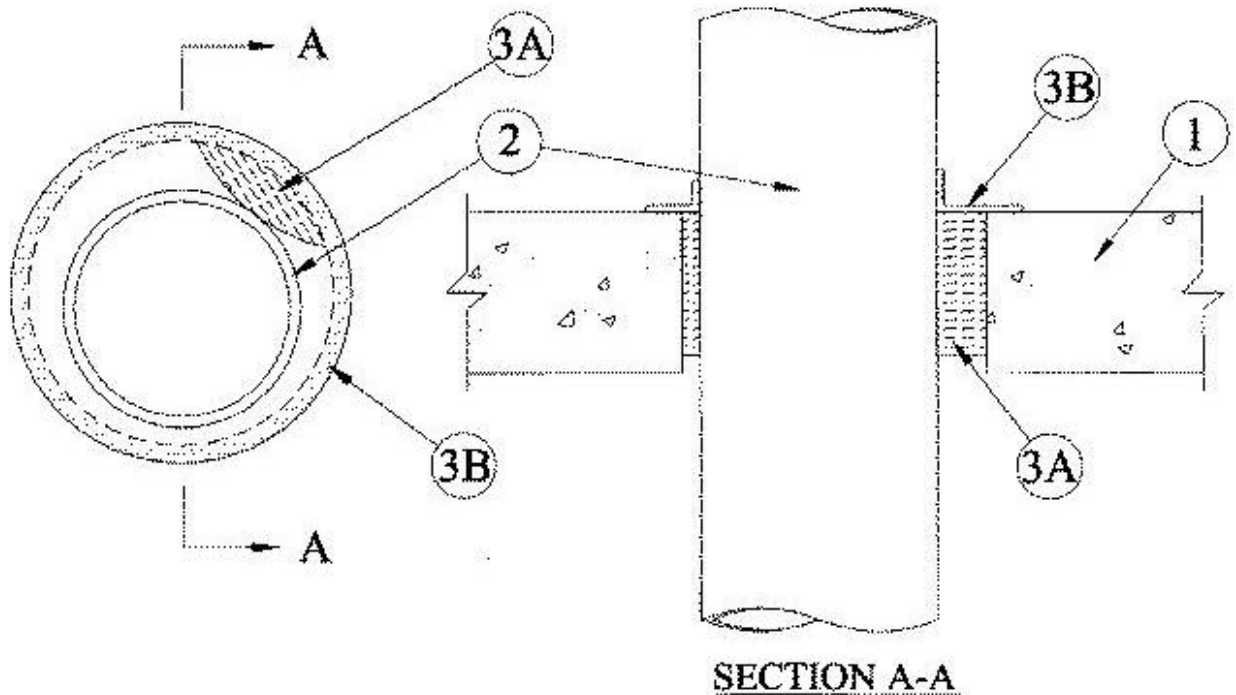


System No. C-AJ-1324

November 29, 1999

F Rating — 3 Hr.

T Rating — 0 Hr.



1. Floor or Wall Assembly Min 4-1/2 in. thick reinforced normal weight (140-150 pcf) concrete floor or min 5 in. thick reinforced normal weight concrete wall. Wall may also be constructed of any UL Classified **Concrete Blocks***. Max dia. of opening is 26 in.

See **Concrete Blocks** (CAZT) category in the Fire Resistance Directory for names of manufacturers.

2. Through Penetrant One metallic pipe, conduit or tubing to be installed either concentrically or eccentrically within the firestop system. The annular space between pipe, conduit or tubing and periphery of opening shall be min 1/2 in. to max 1-3/8 in. Pipe, conduit or tubing to be rigidly supported on both sides of floor or wall assembly. The following types and sizes of metallic pipes, conduits or tubing may be used:

A. **Steel Pipe** Nom 24 in. dia. (or smaller) Schedule 40 (or heavier) steel pipe.

B. **Iron Pipe** Nom 24 in. dia. (or smaller) cast or ductile iron pipe.

C. **Conduit** Nom 4 in. dia. (or smaller) steel electrical metallic tubing or nom 6 in. dia. steel conduit.

D. **Copper Tubing** Nom 6 in. dia. (or smaller) Type K (or heavier) copper tubing.

E. **Copper Pipe** Nom 6 in. dia. (or smaller) Regular (or heavier) copper pipe.

3. **Firestop System** The firestop system shall consist of the following:

A. **Packing Material** Min 4 in. thickness of min 4 pcf mineral wool batt insulation firmly packed into opening as a permanent form. Packing material to be recessed from top surface of floor or from both surfaces of wall as required to accommodate the required thickness of fill material.

B. **Fill, Void or Cavity Materials* — Sealant** Min 3/16 in. wet thickness of fill material brush or spray applied over the annulus and shall overlap min 1 in. onto penetrant and floor or wall assembly on top surface of floor and on both surfaces of wall.

A/D FIRE PROTECTION SYSTEMS INC — A/D FIREBARRIER Seal N/S

*Bearing the UL Classification Marking