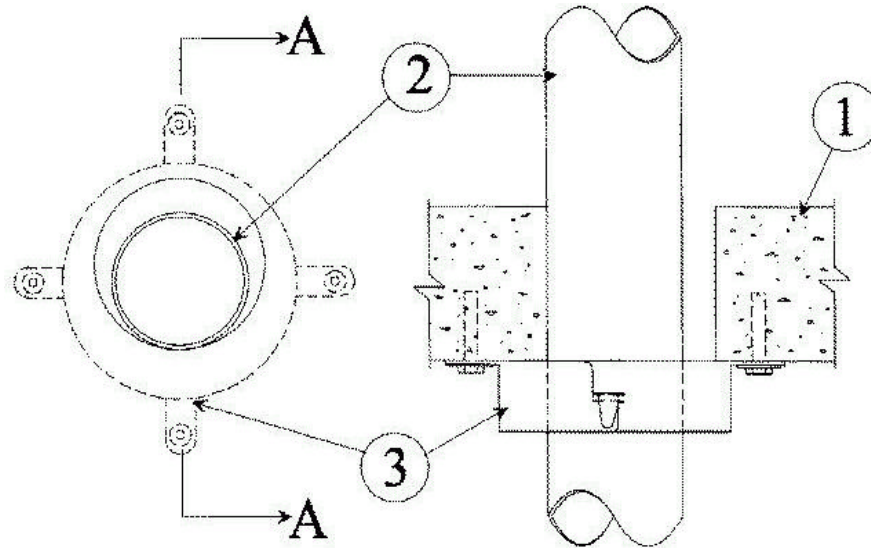


UL System No. C-AJ-2187

November 06, 2001

F Rating — 2 Hr

T Rating — 2 Hr



SECTION A-A

1. **Floor or Wall Assembly** Min 4-1/2 in. thick reinforced lightweight or normal weight (10-150 pcf) concrete. Floor may also be constructed of any min 6 in. thick UL Classified hollow-core **Precast Concrete Units***. Wall may also be constructed of any UL Classified **Concrete Blocks***. Max dia. of opening is 5 in.

See **Concrete Blocks (CAZT)** and **Precast Concrete Units (CFTV)** categories in the Fire Resistance Directory for names of manufacturers.

2. **Through Penetrants** One nonmetallic pipe or conduit to be installed either concentrically or eccentrically within the firestop system. The annular space between the pipe or conduit and the periphery of the opening shall be a min of 0 in. (point contact) to a max 1/2 in. Pipe or conduit to be rigidly supported on both sides of the floor or wall assembly. The following types and sizes of nonmetallic pipes or conduits may be used:

A. **Polyvinyl Chloride (PVC) Pipe** Nom 4 in. dia. (or smaller) Schedule 40 solid core PVC pipe for use in closed (process or supply) or vented (drain, waste, or vent) piping systems.

B. **Chlorinated Polyvinyl Chloride (CPVC) Pipe** Nom 4 in. dia. (or smaller) SDR 17 CPVC pipe for use in closed (process or supply) or vented (drain, waste or vent) piping systems.

C. **Rigid Nonmetallic Conduit+** Nom 4 in. dia. (or smaller) Schedule 40 PVC conduit installed in accordance with Articles 347 and 710 of the National Electrical Code (NFPA No. 70).

C-AJ-2187 continued...

3. **Firestop Device** Galv steel sleeve lined with an intumescent material sized to fit the specific dia. of the through penetrant. Device to be wrapped around outer circumference of through penetrant and secured together in accordance with the installation instructions supplied with the product. In floors, the device shall be installed on the bottom side of the concrete floor. In wall assemblies, the device shall be installed on each side of the concrete wall. Device shall be secured to concrete surface at each mounting tab with 1/4 in. dia. by min 1-3/4 in. long steel concrete anchors in conjunction with min 1/4 in. by 1-1/4 in. dia. steel fender washers.

A/D FIRE PROTECTION SYSTEMS INC — A/D FIREBARRIER Collar

*Bearing the UL Classification Marking

+Bearing the UL Listing Mark