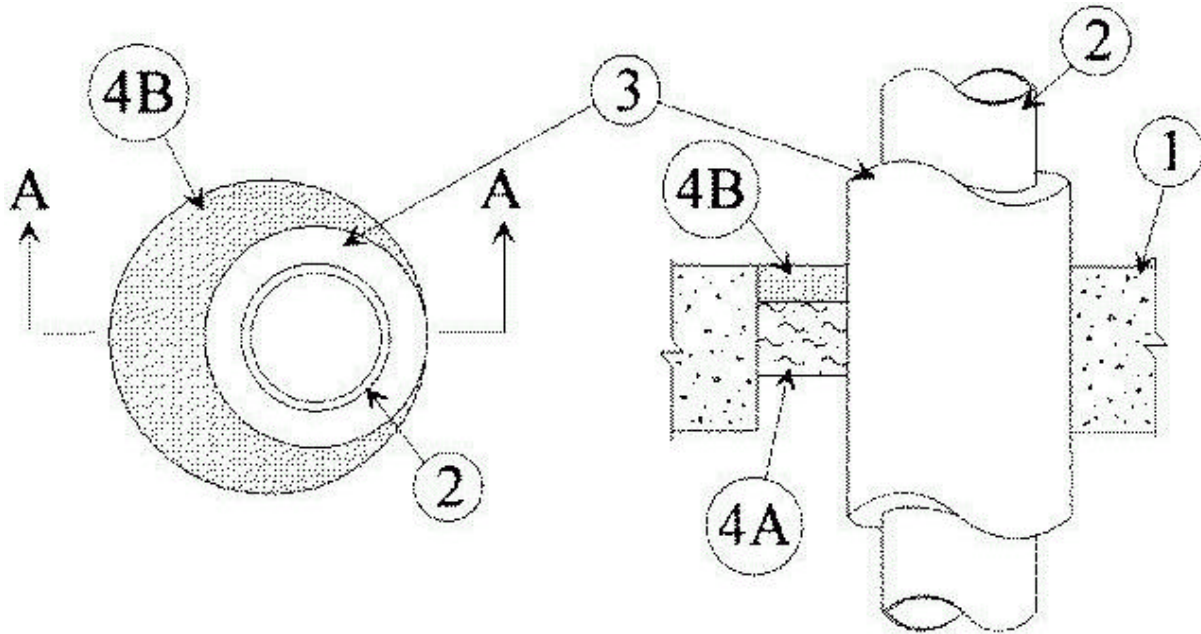


UL System No. C-AJ-5095

F Rating — 2 Hr

T Rating — 1-1/2 Hr



SECTION A-A

1. **Floor or Wall Assembly** Min 4-1/2 in. thick reinforced normal weight (140-150 pcf) concrete. Wall may also be constructed of any UL Classified **Concrete Blocks***. Max dia. of opening is 8-1/2 in.

See **Concrete Blocks** (CAZT) category in the Fire Resistance Directory for names of manufacturers.

2. **Through Penetrants** One metallic pipe to be installed either concentrically or eccentrically within the firestop system. Pipe to be rigidly supported on both sides of floor or wall assembly. The following types and sizes of metallic pipes may be used:

A. **Steel Pipe** Nom 4 in. dia. (or smaller) Schedule 40 (or heavier) steel pipe.

B. **Iron Pipe** Nom 4 in. dia. (or smaller) cast or ductile iron pipe.

3. **Pipe Coverings*** One of the following types of pipe coverings shall be used:

A. **Pipe and Equipment Covering Materials*** Nom 3/4 in. thick hollow cylindrical heavy density (min 3.5 pcf) glass fiber units jacketed on the outside with an all service jacket. Longitudinal joints sealed with metal fasteners or factory-applied self-sealing lap tape. Transverse joints secured with metal fasteners or with butt tape supplied with the product. The annular space within the firestop system shall be 0 in. to max. 2-1/2 in.

continued.....

B. Pipe Covering Materials* Nom 3/4 in. thick unfaced mineral fiber pipe insulation having a nom density of 3.5 pcf (or heavier) and sized to the outside dia. of pipe or tube. Pipe insulation secured with min 8 AWG steel wire spaced max 12 in. OC. The annular space within the firestop system shall be 0 in. to max 2-1/2 in.

PARTEK INSULATIONS INC — Paroc 1200, Paroc BWT or Paroc Thermaloc 1200

PARTEK INSULATIONS INC — Paroc 1200, Paroc BWT or Paroc Thermaloc 1200

C. Sheathing Material* Used in conjunction with Item 3B. Foil-scrim-kraft or all service jacket material shall be wrapped around the outer circumference of the pipe insulation (Item 3B) with the kraft side exposed. Longitudinal joints and transverse joints sealed with metal fasteners or butt tape.

See **Sheathing Materials (BVDV)** category in the Building Materials Directory for names of manufacturers. Any sheathing material meeting the above specifications and bearing the UL Classification Marking with a Flame Spread Index of 25 or less and a Smoke Developed Index of 50 or less may be used.

5. Firestop System The firestop system shall consist of the following:

A. Packing Material Min 2 in. thickness of min 4 pcf mineral wool batt insulation firmly packed into opening as a permanent form. Packing material to be recessed from top surface of floor or from both surfaces of wall as required to accommodate the required thickness of fill material.

B. Fill, Void or Cavity Material* — Mortar Min 1 in. thickness of fill material applied within the annulus flush with the top surface of the floor or with both surfaces of wall. At the point contact location between insulated through penetrant and concrete, fill material forced into interstices of insulated through penetrant and concrete to max extent possible. Mortar to be mixed with water at a rate of 2.7 parts dry mixture to 1.0 part water by weight in accordance with the installation instructions supplied with the product.

A/D FIRE PROTECTION SYSTEMS INC — A/D FIREBARRIER Mortar

*Bearing the UL Classification Marking