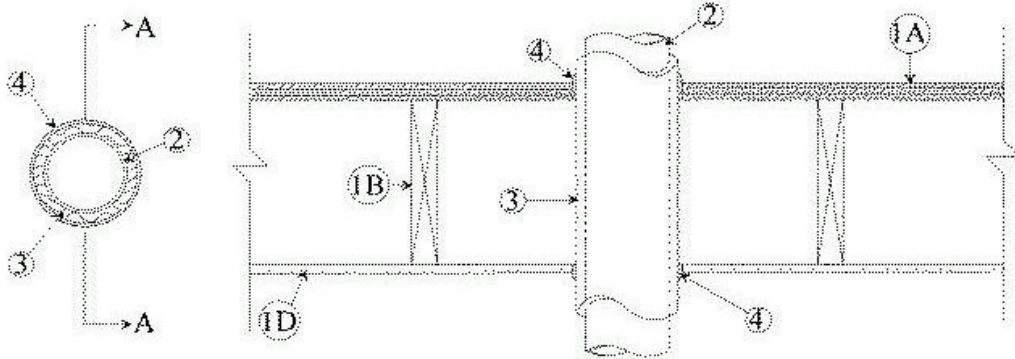


UL System No. F-C-5007

F Rating — 1 Hr

T Ratings — 3/4 & 1 Hr



SECTION A-A

1. Floor-Ceiling Assembly The fire-rated wood joist floor-ceiling assembly shall be constructed of the materials and in the manner specified in Design Nos. L512, L513 or L514 in the UL Fire Resistance Directory, and shall include the following construction features:

A. Flooring System Lumber or min 1/2 in. plywood sub-floor with lumber or min 3/4 in. plywood finish floor, or **Floor-Topping Mixture*** as specified in the individual Floor-Ceiling Design. Max dia. of opening is 6 in.

B. Wood Joists Nom 2 by 10 in. lumber joists spaced 16 in. OC with nom 1 by 3 in. lumber bridging and with ends firestopped.

C. Furring Channels (Not Shown) — Resilient galv. steel furring installed perpendicular to wood joists between wallboard (Item 1D) and wood joists and spaced max 24 in. OC.

D. Gypsum Board* Nom 4 ft wide by 1/2 or 5/8 in. thick as specified in the individual Floor-Ceiling Design. Wallboard attached to wood joists and furring channels as specified in the individual Floor-Ceiling Design. Max dia. of opening is 6 in.

2. Through Penetrants One metallic pipe or tubing installed approximately midway between wood joist and centered within the firestop system. Dia. of openings hole-sawed through flooring system and through gypsum wallboard ceiling to be nom 1/4 in. larger than the outside dia. of through penetrant. Pipe or tubing to be rigidly supported on both sides of floor-ceiling assembly. The following types and sizes of metallic pipes or tubing may be used:

A. Steel Pipe Nom 4 in. dia. (or smaller) Schedule 5 (or heavier) steel pipe.

B. Copper Pipe Nom 4 in. dia. (or smaller) Regular (or heavier) copper pipe.

C. Copper Tubing Nom 4 in. dia. (or smaller) Type L (or heavier) copper tubing.

The T Rating of the firestop system is dependent upon the type of penetrant used as tabulated below:

F-C-5007 continued...

Penetrant Type	T Rating Hr
Steel Pipe	1
Copper Pipe	3/4
Copper Tubing	3/4

3. Pipe Covering* The following types of pipe coverings may be used:

A. Pipe and Equipment Covering — Materials* Nom 1/2 in. thick hollow cylindrical heavy density (min 3.5 pcf) glass fiber units jacketed on the outside with an all service jacket. Longitudinal joints sealed with metal fasteners or factory-applied self-sealing tape. Transverse joints secured with metal fasteners or with butt tape supplied with the product. Dia. of openings hole-sawed through flooring system and through gypsum wallboard ceiling to be nom 1/4 in. larger than the outside dia. of through-penetrant.

See **Pipe and Equipment Covering — Materials** (BRGU) category in the Building Materials Directory for names of manufacturers. Any pipe covering material meeting the above specifications and bearing the UL Classification Marking with a Flame Spread Index of 25 or less and a Smoke Developed Index of 50 or less may be used.

B. Pipe Covering Materials* Nom 1/2 in. thick unfaced mineral fiber pipe insulation having a nom density of 3.5 pcf (or heavier) and sized to the outside dia. of pipe or tube. Pipe insulation secured with min 8 AWG steel wire spaced max 12 in. OC. Dia. of openings hole-sawed through flooring system and through gypsum wallboard ceiling to be nom 1/4 in. larger than the outside dia. of through-penetrant.

OWENS CORNING HT INC, DIV OF

OWENS CORNING — High Temperature Pipe Insulation 1200, High Temperature Pipe Insulation BWT or High Temperature Pipe Insulation Thermaloc

C. Sheathing Material* (Not Shown) — Used in conjunction with Item 3B. Foil-scrim-kraft or all service jacket material shall be wrapped around the outer circumference of the pipe insulation (Item 3B) with the kraft side exposed. Longitudinal joints and transverse joints sealed with metal fasteners or with butt tape.

See **Sheathing Materials** (BVDV) category in the Building Materials Directory for names of manufacturers. Any sheathing material meeting the above specifications and bearing the UL Classification Marking with a Flame Spread Index of 25 or less and a Smoke Developed Index of 50 or less may be used.

4. Fill, Void or Cavity Material* — Caulk On top of assembly, a min 1-1/8 in. depth of fill material applied within annulus on top surface of floor. On bottom of assembly, a min 1/2 in. depth of fill material applied within annulus on bottom surface of ceiling. Additional fill material to be installed such that a min 1/2 in. thick crown is formed around the through penetrant on both sides of floor-ceiling assembly.

A/D FIRE PROTECTION SYSTEMS INC — A/D FIREBARRIER Silicone

*Bearing the UL Classification Marking