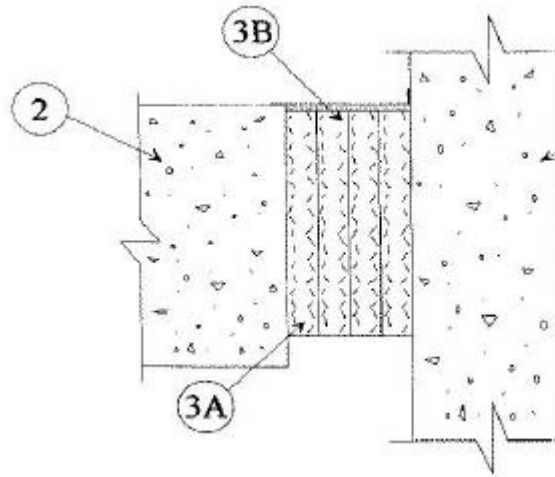


UL System No. FW-D-1029

Assembly Rating — 2 Hr

Nominal Joint Width — 3-1/2 In.

Class II Movement Capabilities — 14% Compression or Extension



1. **Wall Assembly** Min 4-1/2 in. thick reinforced lightweight or normal weight (100 - 150 pcf) structural concrete. Wall may also be constructed of any UL Classified **Concrete Blocks***.

See **Concrete Blocks** (CAZT) category in the Fire Resistance Directory for names of manufacturers.

2. **Floor Assembly** Min 4-1/2 in. thick reinforced lightweight or normal weight (100 - 150 pcf) structural concrete.

3. **Joint System** Max separation between edge of floor and face of wall (at time of installation of joint system) is 3-1/2 in. The joint system is designed to accommodate a max 14 percent compression or extension from it's installed width. The joint system shall consist of the following:

A. **Forming Material*** Min 4 pcf mineral wool batt insulation installed in joint opening as a permanent form. Pieces of batt cut to min width of 4 in. and installed edge-first into joint opening, parallel with joint direction, such that batt sections are compressed min 30 percent in thickness and that the compressed batt sections are flush with top surface of the floor. Adjoining lengths of batt to be tightly-butted with butted seams spaced min 24 in. apart along the length of the joint.

A/D FIRE PROTECTION SYSTEMS INC — A/D FIREBARRIER Mineral Wool

B. **Fill, Void or Cavity Material* - Spray** Min 1/8 in. wet thickness of fill material sprayed or brushed on top surface of floor to completely cover mineral wool and overlap a min 1/2 in. onto the top surface of the floor and side of wall.

A/D FIRE PROTECTION SYSTEMS INC — A/D FIREBARRIER Seal
N/S

*Bearing the UL Classification Mark