

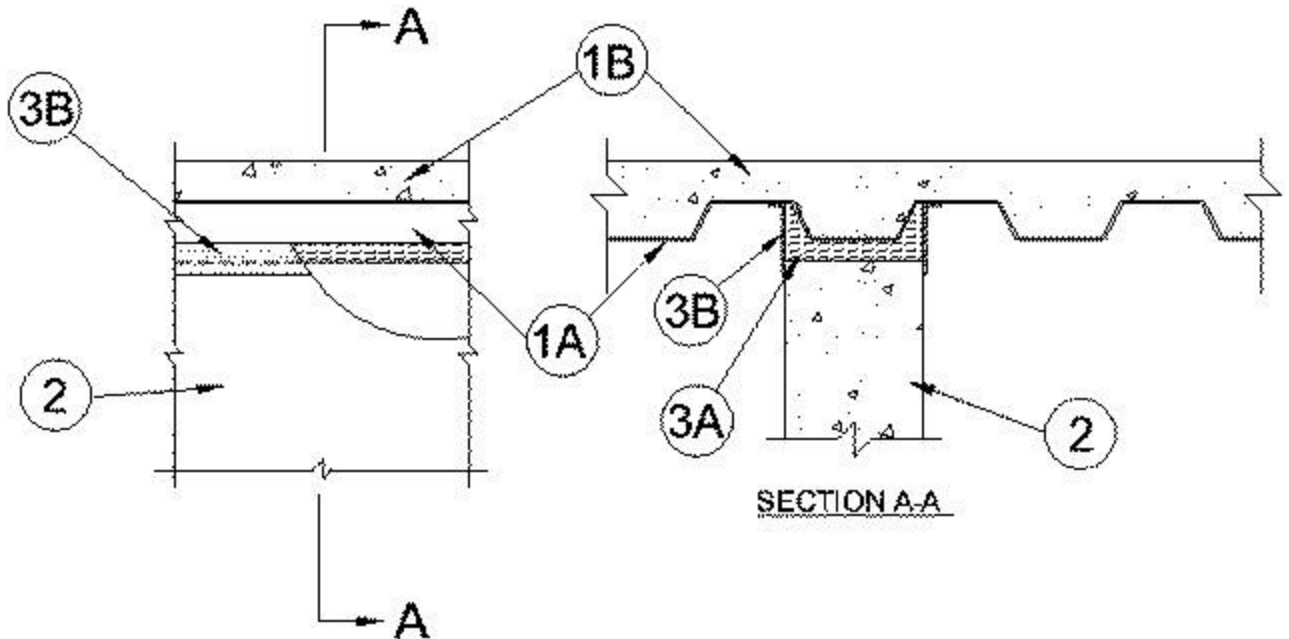
UL System No. HW-D-0250

March 27, 2002

Assembly Rating — 2 Hr

Nominal Joint Width - 1 In.

Class II Movement Capabilities - 18.75% Compression or Extension



1. Floor Assembly The fire-rated fluted steel deck/concrete floor assembly shall be constructed of the materials and in the manner described in the individual D900 Series Floor-Ceiling Design in the UL Fire Resistance Directory and shall include the following construction features:

A. Steel Floor And Form Units* Max 3 in. deep galv steel fluted floor units.

B. Concrete Min 2-1/2 in. thick reinforced concrete, as measured from the top plane of the floor units.

1A. Roof Assembly - (Not Shown) As an alternate to the floor assembly, a fire-rated fluted steel deck roof assembly may be used. The roof assembly shall be constructed of the materials and in the manner described in the individual P900 Series Roof-Ceiling Design in the UL Fire Resistance Directory. The hourly rating of the roof assembly shall be equal to or greater than the hourly rating of the wall assembly. The roof assembly shall include the following construction features:

A. Steel Roof Deck Max 3 in. deep galv steel fluted roof deck.

B. Roof Insulation Min 2-1/4 in. thick poured insulating concrete, as measured from the top plane of the roof deck.

2. Wall Assembly Min 6 in. thick reinforced lightweight or normal weight (100-150 pcf) structural concrete. Wall to be parallel to and centered under the valleys of the steel floor units or roof deck. Wall may also be constructed of any UL Classified **Concrete Blocks***

See **Concrete Blocks*** (CAZT) category in the Fire Resistance Directory for names of manufacturers.

3. Joint System Max separation between bottom of floor and top of wall at time of installation of joint system is 1 in. The joint system is designed to accommodate a max 18.75 percent compression or extension from its installed width. The joint system consists of a forming material and a fill material, as follows:

A. Forming Material* Min 4 pcf density mineral wool batt insulation compressed 50 percent in thickness and as necessary in width, and inserted into opening between the top of the wall and the steel floor unit or roof deck and installed flush with both surfaces of the wall.

A/D FIRE PROTECTION SYSTEMS INC — A/D FIREBARRIER Mineral Wool

SLIPTRACK SYSTEMS INC — FBX SAFING INSULATION

B. Fill, Void or Cavity Material* * Min 1/8 in. wet thickness of fill material spray or brush applied on each side of the wall to completely cover mineral wool forming material and to overlap a min of 1/2 in. onto concrete wall and steel floor units or roof deck on both sides of wall.

A/D FIRE PROTECTION SYSTEMS INC — A/D FIREBARRIER Seal N/S

*Bearing the UL Classification Mark