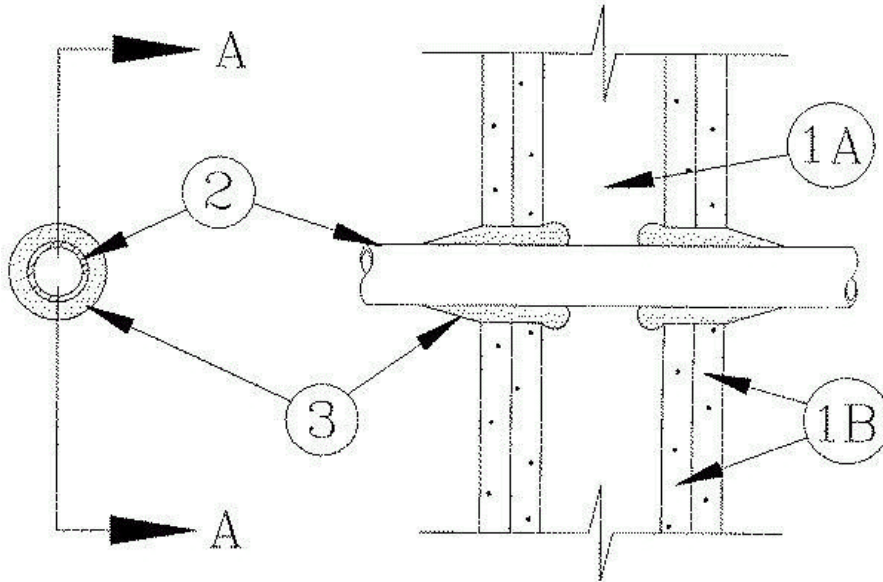


UL System No. W-L-1050
(Formerly System No. 643)
F Rating — 1, 2 Hr (See Item 1B)
T Rating — 1 Hr



SECTION A-A

1. **Wall Assembly** The 1 or 2 h fire-rated gypsum wallboard/stud wall assembly shall be constructed of the materials and in the manner described in the individual U300 or U400 Series Wall or Partition Design in the UL Fire Resistance Directory and shall include the following construction features:

A. **Studs** Wall framing may consist of either wood studs or steel channel studs. Wood studs to consist of nom 2 by 4 in. lumber spaced 16 in. OC. Steel studs to be min 2-1/2 in. wide and spaced max 24 in. OC.

B. **Gypsum Board** * 1/2 in. thick, 4 ft wide with square or tapered edges. The gypsum wallboard type, thickness, number of layers, fastener type and sheet orientation shall be as specified in the individual U300 or U400 Series Design in the UL Fire Resistance Directory. Max diam of opening is 2 in.

The hourly F Rating of the firestop system is equal to the hourly fire rating of the wall assembly in which it is installed.

W-L-1050 continued...

2. Through Penetrants One metallic pipe, conduit or tubing to be centered within the firestop system. A nominal annular space of 1/4 in. is required within the firestop system. Pipe, conduit or tubing to be rigidly supported on both sides of wall assembly. The following types and sizes of metallic pipes, conduits or tubing may be used:

A. **Steel Pipe** Nom 1-1/4 in. diam (or smaller) Schedule 5 (or heavier) steel pipe.

B. **Conduit** Nom 1-1/4 in. diam (or smaller) steel electrical metallic tubing or steel conduit.

3. Fill, Void or Cavity Material* Caulk in 2 h fire-rated assemblies, min 1 in. thickness of fill material applied within the annulus on both surfaces of wall. Additional fill material to be installed such that a min 1/4 in. crown is formed around the penetrating item.

In 1 h fire-rated assemblies, min 1/2 in. thickness of fill material applied within annulus on both surfaces of wall. Additional fill material to be installed such that a min 3/4 in. crown is formed around the penetrating item and lapping 1 in. beyond the periphery of the opening.

A/D FIRE PROTECTION SYSTEMS INC — A/D FIREBARRIER Silicone.

*Bearing the UL Classification Marking