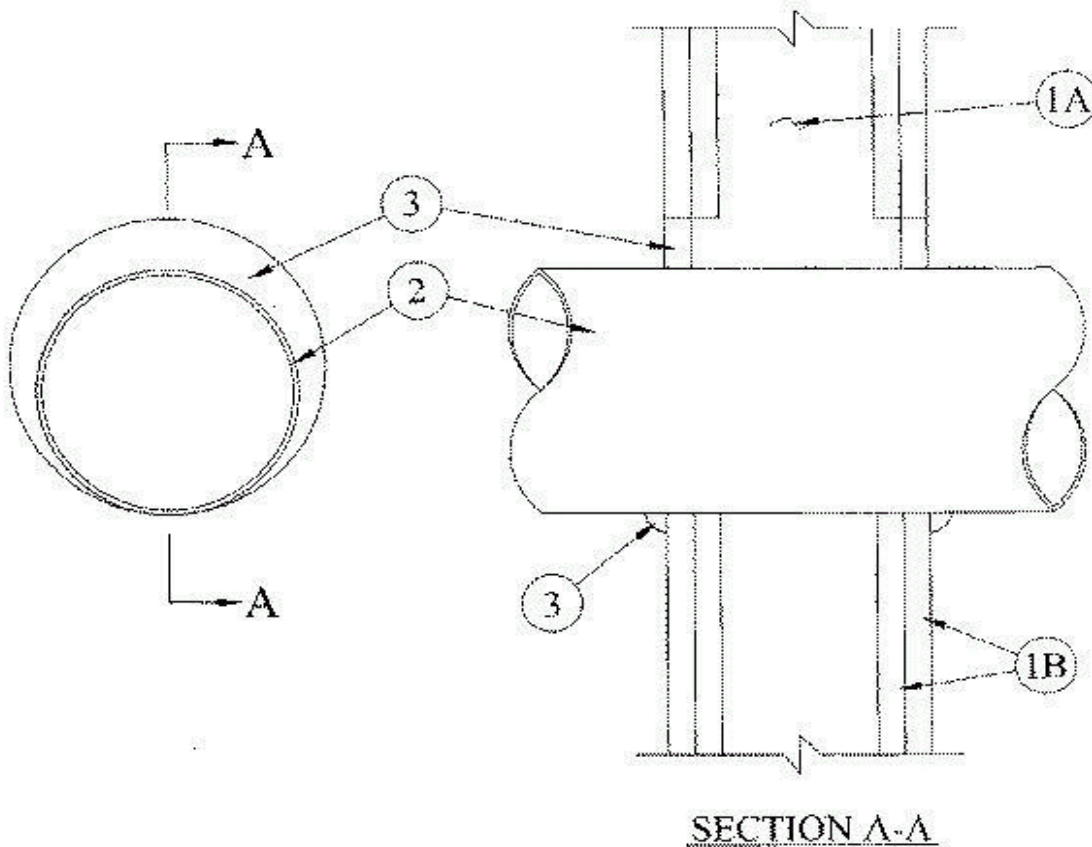


**UL System No. W-L-1198**  
**F Rating — 1 and 2 Hr (See Item 1)**  
**T Rating — 0 Hr**



1. **Wall Assembly** The 1 or 2 hr fire-rated gypsum wallboard/stud wall assembly shall be constructed of the materials and in the manner described in the individual U300 or U400 Series Wall or Partition Design in the UL Fire Resistance Directory and shall include the following construction features:

A. **Studs** Wall framing may consist of either wood studs or steel channel studs. Wood studs to consist of nom 2 by 4 in. lumber spaced 16 in. OC with nom 2 by 4 in. lumber end plates and cross braces. Steel studs to be min 3-5/8 in. wide and spaced max 24 in. OC.

B. **Wallboard, Gypsum\*** 5/8 in. thick, 4 ft wide with square or tapered edges. The gypsum wallboard type, thickness, number of layers, fastener type and sheet orientation shall be as specified in the individual U300 or U400 Series Design in the UL Fire Resistance Directory. Max dia. of opening is 4 in.

**The hourly F Rating of the firestop system is equal to the hourly fire rating of the wall assembly in which it is installed.**

W-L-1198 continued...

2. **Through Penetrant** One metallic pipe, tubing or conduit to be installed either concentrically or eccentrically within the firestop system. The annular space between pipes, tubing or conduits and periphery of opening shall be min 0 in. (point contact) to max 1-7/8 in. Pipe, tubing or conduit to be rigidly supported on both sides of wall assembly. The following types and sizes of metallic pipes, tubing or conduits may be used:

- A. **Steel Pipe** Nom 2 in. dia. (or smaller) Schedule 10 (or heavier) steel pipe.
- B. **Iron Pipe** Nom 2 in. dia. (or smaller) cast or ductile iron pipe.
- C. **Copper Tubing** Nom 2 in. dia. (or smaller) Type L (or heavier) copper tubing.
- D. **Copper Pipe** Nom 2 in. dia. (or smaller) Regular (or heavier) copper pipe.
- E. **Conduit** Nom 2 in. dia. (or smaller) steel electrical metallic tubing or galv. steel conduit.

3. **Fill, Void or Cavity Material\* Sealant** Min 5/8 in. thickness of fill material applied within annulus, flush with both surfaces of wall. At the point contact location between through penetrant and gypsum wallboard, a min 3/8 in. dia. bead of fill material shall be applied at the gypsum wallboard/through penetrant interface on both surfaces of wall.

**A/D FIRE PROTECTION SYSTEMS INC — A/D FIREBARRIER Silicone**

\*Bearing the UL Classification Mark