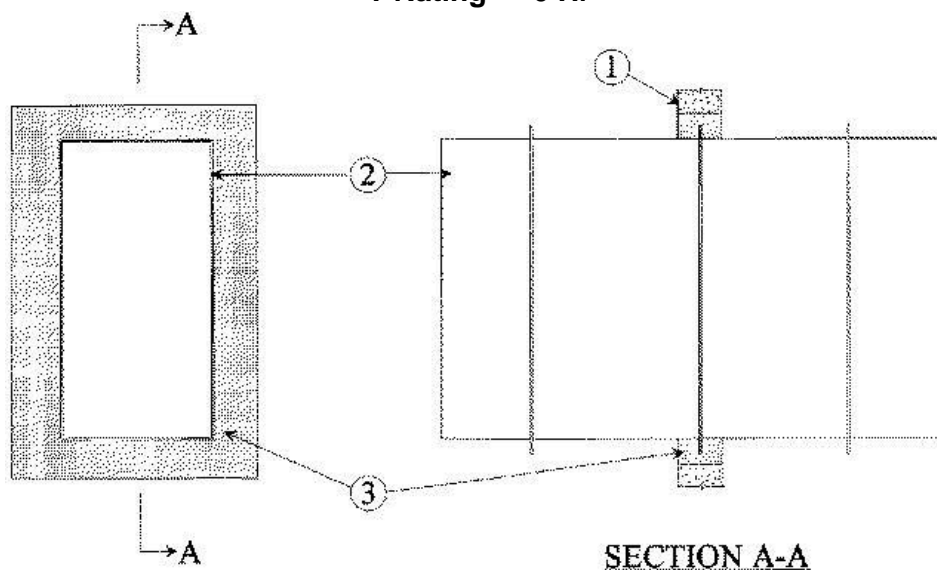


UL System No. C-AJ-7029

June 19, 2001

F Rating — 2 Hr

T Rating — 0 Hr



1. Floor or Wall Assembly Min 4-1/2 in. thick reinforced lightweight or normal weight (100-150 pcf) concrete. Wall may also be constructed of any UL Classified **Concrete Blocks***. Max area of opening is 1936 sq in. with max dimension of 44 in.

See **Concrete Blocks** (CAZT) category in the Fire Resistance Directory for names of manufacturers.

2. Through-Penetrants — Coated Ducts* Min 0.039 in. (20 gauge) thick coated steel air duct having a max perimeter dimension of 160 in. and a max individual dimension of 40 in. Duct supplied coated with BW11 coating material. One duct to be centered within the firestop system with an annular space of 2 in. Reinforcement stiffener or transverse joint with bolted flanges shall be located approximately at the mid depth of the annular space. Duct to be rigidly supported on both sides of the floor or wall assembly. Duct sections shall be assembled using bolted flanges or SMACNA approved Transverse Joint Reinforcements.

FIRE PROTECTION LTD — FLAMEBAR BW11 FIRE RATED DUCTWORK
FIRESPRAY INTERNATIONAL LTD — FLAMEBAR BW11 FIRE RATED DUCTWORK

3. Firestop System The firestop system shall consist of the following:

A. Forms (Not Shown) — Used as a form to prevent leakage of fill material during installation. Forms to be a rigid sheet material, cut to fit the contour of the penetrating item and fastened to the underside of the floor or both sides of wall. Forms to be removed after fill material has cured.

B. Fill, Void or Cavity Material* — Mortar Fill material applied within the annulus, flush with top and bottom surfaces of floor or with both surfaces of wall. Mortar is mixed with water in accordance with the mortar manufacturer's installation instructions.

A/D FIRE PROTECTION SYSTEMS INC — A/D Firebarrier Mortar

*Bearing the UL Classification Mark