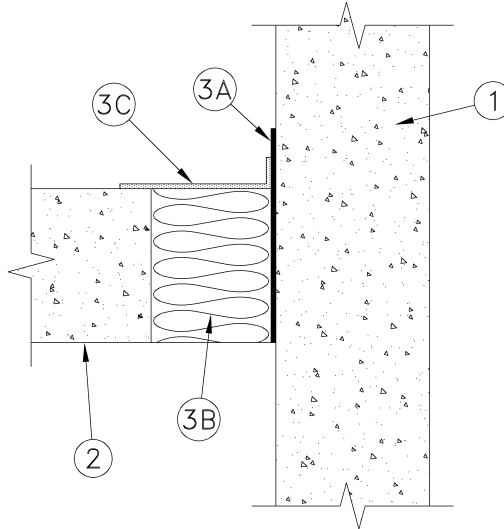


UL System No. FW-S-0005

Assembly Rating – 1 Hr
Joint Width — 2 in. Max.



1. **Wall Assembly** - Min 2-1/2 in. thick reinforced lightweight or normal weight (100-150 pcf) structural concrete. Wall may also be constructed of any UL Classified **Concrete Blocks***.

See **Concrete Blocks** (CAZT) category in the Fire Resistance Directory for names of manufacturers.

2. **Floor Assembly** — Min 2-1/2 in. thick reinforced lightweight or normal weight (100-150 pcf) structural concrete.

3. **Joint System** — Max width of joint is 2 in. The joint system shall consist of the following:

A. **Membranes*** - (Optional) - Min 3-1/2 in. width of membrane applied to either inside surface of joint, flush with bottom of joint and extending a min of 1 in. on wall surface above joint or overlapping min 1 in. onto top surface of floor. Each adjoining length of membrane shall overlap previous length by 2 in. Prior to application of membrane, Blueskin Primer applied to concrete surface at a min application rate of 0.04 psf.

HENRY CO. – Blueskin SA and SA-LT

B. **Forming Material*** - Min 2-1/2 in. thickness of min 4 pcf mineral wool batt insulation installed in joint opening as a permanent form. Pieces of batt cut into strips and installed edge-first into joint opening, parallel with joint direction, such that batt sections are compressed min 30% in thickness and that the compressed batt sections are flush with top surface of floor. Adjoining lengths of batt to be tightly-butted with butted seams spaced min 24 in. apart along the length of the joint.

A/D FIRE PROTECTION SYSTEMS INC – A/D FIREBARRIER Mineral Wool

C. **Fill, Void or Cavity Material*** - Min 1/8 in. thickness of fill material, sprayed or brushed to the bottom or top surface of joint to completely cover mineral wool and overlapping onto concrete surface a min of 1/2 in. on each side of joint.

A/D FIRE PROTECTION SYSTEMS INC – A/D FIREBARRIER Seal NS

*Bearing the UL Classification Mark