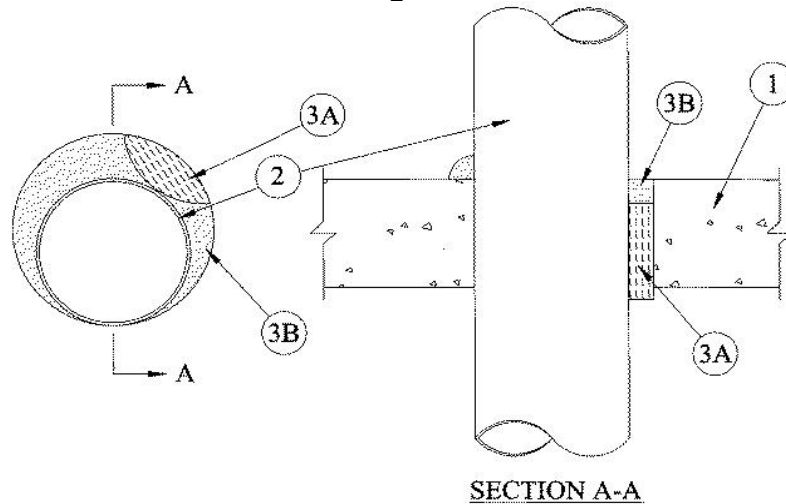


## UL System No. C-AJ-1323

June 09, 2003

F Rating — 3 Hr.

T Rating — 0 Hr.



1. **Floor or Wall Assembly** — Min. 4-1/2 in. thick reinforced normal weight (140-150 pcf) concrete floor or min. 6 in. thick reinforced normal weight concrete wall. Wall may also be constructed of any UL Classified **Concrete Blocks\***. Max. dia. of opening is 26 in.

See **Concrete Blocks** (CAZT) category in the Fire Resistance Directory for names of manufacturers.

2. **Through Penetrant** — One metallic pipe, conduit or tubing to be installed either concentrically or eccentrically within the firestop system. The annular space between pipe, conduit or tubing and periphery of opening shall be min. 0 in. (point contact) to max. 1-7/8 in. Pipe, conduit or tubing to be rigidly supported on both sides of floor or wall assembly. The following types and sizes of metallic pipes, conduits or tubing may be used:

- A. **Steel Pipe** — Nom. 24 in. dia. (or smaller) Schedule 40 (or heavier) steel pipe.
- B. **Iron Pipe** — Nom. 24 in. dia. (or smaller) cast or ductile iron pipe.
- C. **Conduit** — Nom. 4 in. dia. (or smaller) steel electrical metallic tubing or nom. 6 in. dia. steel conduit.
- D. **Copper Tubing** — Nom. 6 in. dia. (or smaller) Type K (or heavier) copper tubing.
- E. **Copper Pipe** — Nom. 6 in. dia. (or smaller) Regular (or heavier) copper pipe.

3. **Firestop System** — The firestop system shall consist of the following:

- A. **Packing Material** — Min. 4 in. thickness of min. 4 pcf mineral wool batt insulation firmly packed into opening as a permanent form. Packing material to be recessed from top surface of floor or from both surfaces of wall as required to accommodate the required thickness of fill material. In floors, packing material shall extend a min. 1/2 in. below the bottom surface of the floor.
- B. **Fill, Void or Cavity Materials\* — Sealant** — Min. 1 in. thickness of fill material applied within the annulus, flush with top surface of floor or with both surfaces of wall assembly. At the point contact location between through penetrant and concrete, a min. 1/2 in. dia. bead of fill material shall be applied at the concrete/through penetrant interface on the top surface of floor and on both surfaces of wall.

**A/D FIRE PROTECTION SYSTEMS INC** — A/D FireBarrier Silicone S/L (for floors only) and A/D FireBarrier Silicone (for floors and walls). (For bead at point contact location between concrete and through penetrant, A/D FireBarrier Silicone only.)

\*Bearing the UL Classification Mark