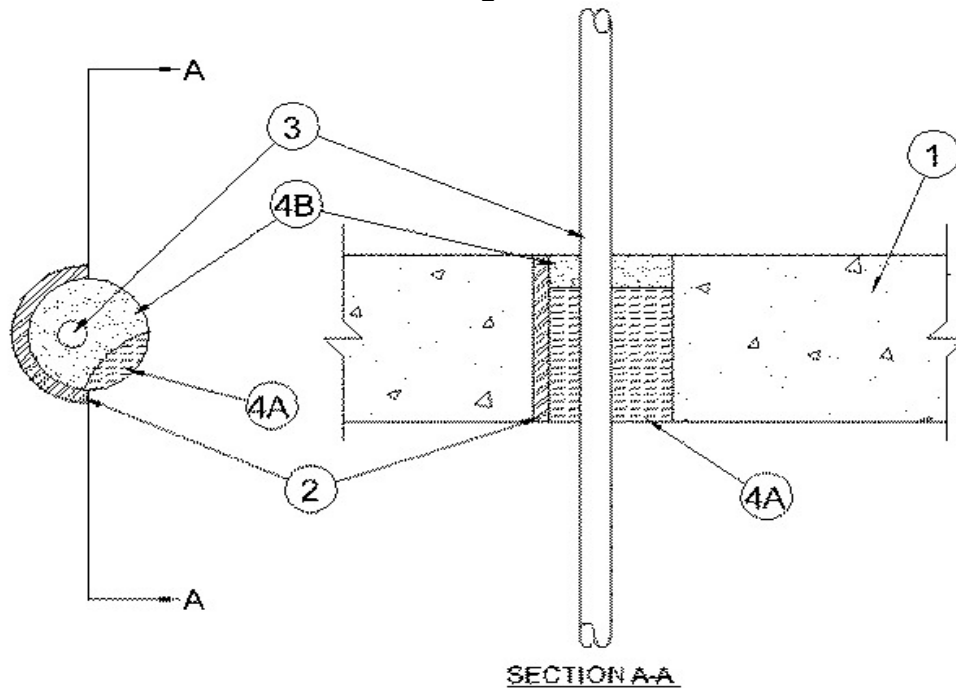


**UL System No. C-AJ-3207**

July 28, 2003

**F Rating — 2 Hr**

**T Rating — 0 Hr**



**1. Floor or Wall Assembly** — Min. 4-1/2 in. thick reinforced normal weight (140-150 pcf) concrete floor or min. 5-1/2 in. thick reinforced lightweight or normal weight wall. Wall may also be constructed of any UL Classified **Concrete Blocks\***. Max. dia. of opening is 3 in.

See **Concrete Blocks** (CAZT) category in the Fire Resistance Directory for names of manufacturers.

**2. Metallic Sleeve** — (Optional) – Nom. 3 in. dia. (or smaller) Schedule 10 (or heavier) steel sleeve cast or grouted into floor or wall assembly, flush with floor or wall surfaces.

**3. Cables** — One cable to be installed either concentrically or eccentrically within the firestop system. The annular space between the cable and the periphery of the opening shall be min. 3/4 in. to a max. 1-1/4 in. Cable to be rigidly supported on both sides of floor or wall assembly. Any of the following types and sizes of cables may be used:

- A. Max. 100 pair No. 24 AWG (or smaller) cable with polyvinyl chloride (PVC) insulation and jacket materials.
- B. Max. 1/C 500 kcmil (or smaller) cable with cross linked polyethylene insulation and jacket materials.
- C. Max. 3/C (with ground) No. 12 AWG (or smaller) nonmetallic sheathed (Romex) cable with PVC insulation and jacket materials.
- D. Max. .RG/U (or smaller) coaxial cable with fluorinated ethylene insulation and jacket materials.
- E. Max. 2/C No. 12 AWG (or smaller) cable with PVC insulation and jacket materials.
- F. Max. 3/C - No. 4/0 AWG (or smaller) aluminum conductor service entrance cable with PVC insulation and jacket.

## UL Design System CAJ-3207 continued...

**3A. Through Penetrating Product\*** — As an alternate to Item 2, max. 4/C No. 2 AWG (or smaller) aluminum or steel Armored Cable+ or 2/0 Metal-Clad Cable+ with copper conductors. Max one armored cable or metal-clad cable to be installed eccentrically within the firestop system. The annular space between the cable and the periphery of the opening shall be min.  $\frac{3}{4}$  in. to a max. 1-1/4 in. Cable to be rigidly supported on both sides of floor or wall assembly.

### **AFC CABLE SYSTEMS INC**

**4. Firestop System** — The firestop system shall consist of the following:

**A. Packing Material** — Min. 3-1/2 in. thickness of min. 4 pcf mineral wool batt insulation firmly packed into opening as a permanent form. Packing material to be recessed from top surface of floor or from both surfaces of wall as required to accommodate the required thickness of fill material.

**B. Fill, Void or Cavity Material\* - Sealant** — Min. 1 in. thickness of fill material applied within the annulus, flush with top surface of floor or with both surfaces of wall.

**A/D FIRE PROTECTION SYSTEMS INC** — A/D FIREBARRIER Silicone SL (floors only)  
and A/D FIREBARRIER Silicone (floors and walls)

\*Bearing the UL Classification Mark