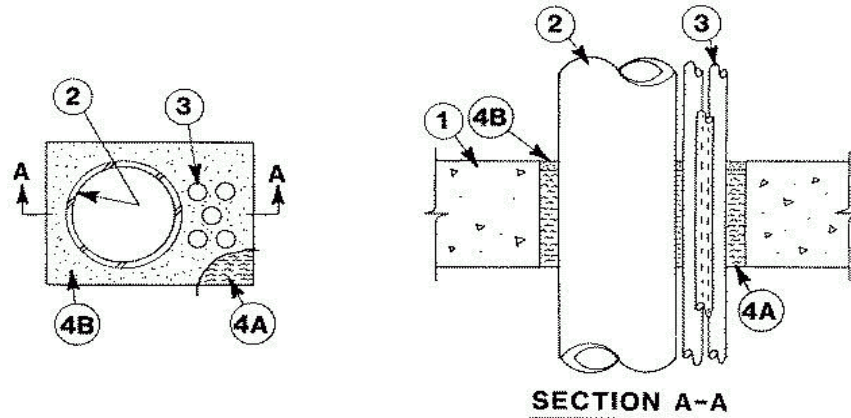


**System No. C-AJ-8023**

December 05, 1992

**F Rating — 3 Hr**

**T Rating — 0 Hr**



1. **Floor or Wall Assembly** Min. 4-1/2 in. thick reinforced lightweight or normal weight (100-150 pcf) concrete. Wall may also be constructed of any UL Classified **Concrete Blocks\***. Max. area of opening is 48 sq in. with max. dimension of 8 in.

See **Concrete Blocks** (CAZT) category in the Fire Resistance Directory for names of manufacturers.

2. **Through Penetrants** One metallic pipe or conduit to be centered within the firestop system. Pipe or conduit to be rigidly supported on both sides of floor or wall assembly. The annular space within the firestop system shall be a nom. 3/4 in. The following types and sizes of metallic pipes or conduit may be used:

A. **Steel Pipe** Nom 4 in. dia. (or smaller) Schedule 5 (or heavier) steel pipe.

B. **Iron Pipe** Nom 4 in. dia. (or smaller) cast or ductile iron pipe.

C. **Conduit** Nom 4 in. dia. (or smaller) electrical metallic tubing or rigid galv steel conduit.

3. **Cables** Max five 7/C No. 12 AWG — Type THW polyvinyl chloride (PVC) or cross-linked polyethylene insulation and PVC jacket. Min. separation between cables and between cables and periphery of opening shall be 3/4 in. Min. separation between cables and pipe or conduit shall be 3/4 in. Cables to be rigidly supported on both sides of floor or wall assembly.

4. **Firestop System** The firestop system shall consist of the following:

A. **Packing Material** Min. 4 in. thickness of min 4 pcf mineral wool batt insulation firmly packed into opening as a permanent form. Packing material to be recessed from top surface of floor or from both surfaces of wall as required to accommodate the required thickness of fill material.

B. **Fill, Void or Cavity Material\* — Sealant** Min. 1/2 in. thickness of fill material applied within the annulus, flush with top surface of floor or with both surfaces of wall.

**A/D FIRE PROTECTION SYSTEMS INC** — A/D Silicone Firebarrier Sealant [S/L (floors only) or G/G (floor or walls)].

\*Bearing the UL Classification Marking