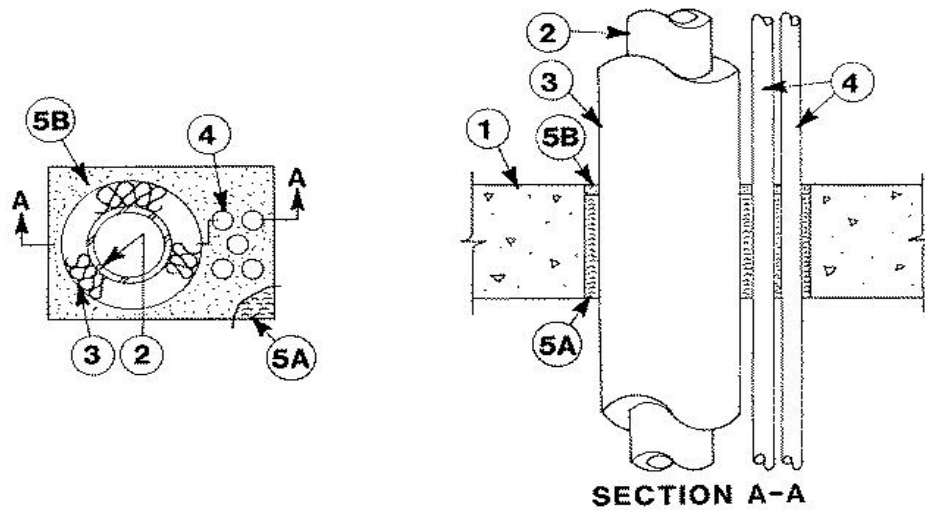


System No. C-AJ-8024

January 21, 1993

F Rating — 2 Hr

T Rating — 1/2 Hr



1. **Floor or Wall Assembly** Min. 4-1/2 in. thick reinforced lightweight or normal weight (100-150 pcf) concrete. Wall may also be constructed of any UL Classified **Concrete Blocks***. Max. area of opening is 48 sq in. with max. dimension of 8 in.

See **Concrete Blocks** (CAZT) category in the Fire Resistance Directory for names of manufacturers.

2. **Steel Pipe** Nom. 3 in. dia. (or smaller) Schedule 5 (or heavier) steel pipe. One pipe to be centered within the firestop system. Pipe to be rigidly supported on both sides of floor or wall assembly.

3. **Pipe Covering*** Nom. 1 in. thick hollow cylindrical heavy density (min. 3.5 pcf) glass fiber units jacketed on the outside with an all service jacket. Longitudinal joints sealed with metal fasteners or factory-applied self-sealing lap tape. Transverse joints secured with metal fasteners or with butt tape supplied with the product. The annular space between the insulated pipe and the periphery of the opening shall be a min. of 3/8 in. to a max. of 1-3/4 in.

See **Pipe and Equipment Covering — Materials** (BRGU) category in the Building Materials Directory for names of manufacturers. Any pipe covering material meeting the above specifications and bearing the UL Classification Marking with a Flame Spread Index of 25 or less and a Smoke Developed Index of 50 or less may be used.

4. **Cables** Max five 7/C No. 12 AWG — Type THW polyvinyl chloride (PVC) or cross-linked polyethylene insulation and PVC jacket. Min. separation between cables and between cables and periphery of opening shall be 3/4 in. Min. separation between cables and pipe or conduit shall be 3/4 in. Cables to be rigidly supported on both sides of floor or wall assembly.

5. **Firestop System** The firestop system shall consist of the following:

A. **Packing Material** Min. 4 in. thickness of min. 4 pcf mineral wool batt insulation firmly packed into opening as a permanent form. Packing material to be recessed from top surface of floor or from both surfaces of wall as required to accommodate the required thickness of fill material.

B. **Fill, Void or Cavity Material* — Sealant** Min. 1/2 in. thickness of fill material applied within the annulus, flush with top surface of floor or with both surfaces of wall.

A/D FIRE PROTECTION SYSTEMS INC — A/D Silicone Firebarrier Sealant [S/L (floors only) or G/G (floor or walls)].

*Bearing the UL Classification Mark