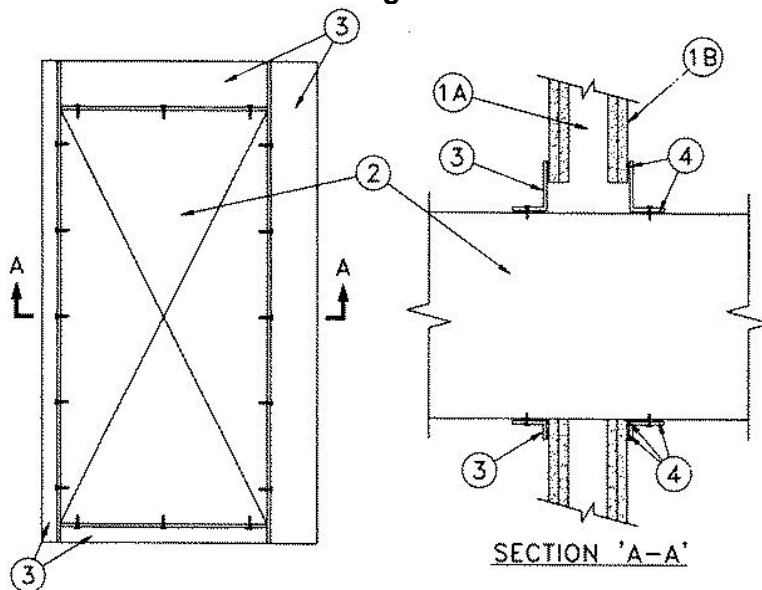


**UL System No. W-L-7073**

June 11, 2004

**F Rating — 1 and 2 Hr (See Item 1)**

**T Rating — 0 Hr**



1. **Wall Assembly** — The 1 or 2 hr fire-rated gypsum wallboard/stud wall assembly shall be constructed of the materials and in the manner described in the individual U400 Series Wall or Partition Design in the UL Fire Resistance Directory and shall include the following construction features:
  - A. **Studs** — Wall framing may consist of either wood studs or steel channel studs. Wood studs to consist of nom 2 by 4 in. Lumber spaced 16 in. OC. Steel studs to be min 3-5/8 in. wide and spaced max 24 in. OC.
  - B. **Wallboard, Gypsum\*** — One or two layers of nom 5/8 in. thick gypsum wallboard as specified in the individual Wall and Partition Design No. Max size of opening to be 800 sq in. with a max dimension of 40 in.
2. **Steel Duct** — Nom 38 by 18 (or smaller) No. 24 gauge (or heavier) steel duct to be installed either concentrically or eccentrically within the firestop system. An annular space of min 0 in. (point contact) to max 2 in. is required within the firestop system. Steel duct to be rigidly supported on both sides of wall assembly.
3. **Retaining Angles** — Min 16 gauge galvanized steel angles sized to lap duct a min of 2 in. and lap wall surfaces a min of 1 in. Angles attached to duct on both sides of wall with min 1/2 in. long No. 10 (or larger) sheet metal screws spaced a max of 4 in. from each end of the duct and spaced a max of 4 in. OC.
4. **Fill, Void or Cavity Material\* — Sealant** — Min 1/4 in. bead of sealant on each leg of steel angle and compressed between angle and duct and angle and drywall. At the point of contact location between duct and wallboard, a min 1/4 in. diam bead of sealant shall be applied at the wallboard/duct interface on both surfaces of wall assembly.

**A/D FIRE PROTECTION SYSTEMS INC — A/D FIREBARRIER Silicone Sealant**

\*Bearing the UL Classification Mark