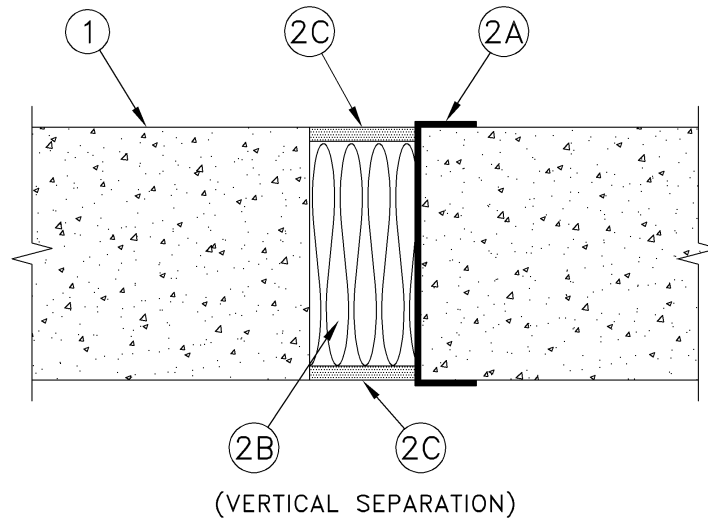
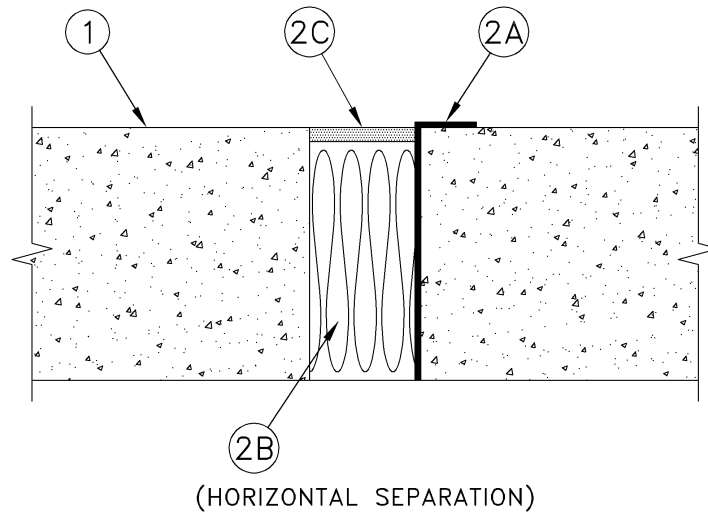


ULC System No. JF121

(For Horizontal or Vertical Separations)

F, FT, FH and FTH Ratings — 2 h

Nominal Joint Width — 50 mm



1. Floor or Wall Assembly — Minimum 114 mm thick reinforced low density or normal-density (1600 to 2400 kg/m^3) structural concrete. Wall may also be constructed of nominal 200 mm thick concrete block.

2. Joint System — Maximum width (at time of installation of joint system) is 50 mm. The joint system may be floor to floor, wall to wall or floor to wall system. The joint system shall consist of the following:

- (a) Membrane** – (Optional) -UL C or ULC classified self-adhesive membrane designated Blueskin SA or SA-LT, cut to minimum 140 mm width and applied to inside surface of joint, flush with bottom of joint and extending a minimum of 25 mm on wall surface above joint or overlapping a minimum of 25 mm onto top surface of floor. For wall to wall joints, membrane cut to minimum 165 mm width and applied to either inside surface of joint, overlapping a minimum of 25 mm onto each surface of wall. Each adjoining length of membrane shall overlap previous length by 50 mm. Prior to application of membrane, Blueskin Primer applied to concrete surface at a minimum application rate of 0.2 kg/m².
- **(b) Firestop System Components** — XHJZC (Guide No. 40 U19.13). Minimum 100 mm thickness of minimum 64 kg/m³ "A/D FIREBARRIER Mineral Wool" batt insulation installed in joint opening as a permanent form. Pieces of batt cut into strips and installed edge-first into joint opening, parallel with joint direction, such that batt sections are compressed minimum 30% in thickness. Adjoining lengths of batt to be tightly-butted with butted seams spaced minimum 610 mm apart along the length of the joint. Mineral wool recessed from top surface of floor or both surfaces of wall as required to accommodate the required thickness of silicone sealant.

A/D FIRE PROTECTION SYSTEMS INC

- **(c) Firestop System Components** — XHJZC (Guide No. 40 U19.13). Minimum 3.2 mm wet thickness of "A/D FIREBARRIER Seal N/S" sprayed or brushed to the top surface of floor or both surfaces of wall to completely cover mineral wool and overlapping a minimum of 13 mm onto concrete surface on both sides of joint.

OR

Minimum 6.4 mm thickness of "A/D FIREBARRIER Silicone" applied within the joint system, flush with top surface of floor or both surfaces of wall

OR

Minimum 6.4 mm thickness of "A/D FIREBARRIER Silicone SL", for horizontal installations only, applied within the joint system, flush with top surface of floor.

A/D FIRE PROTECTION SYSTEMS INC