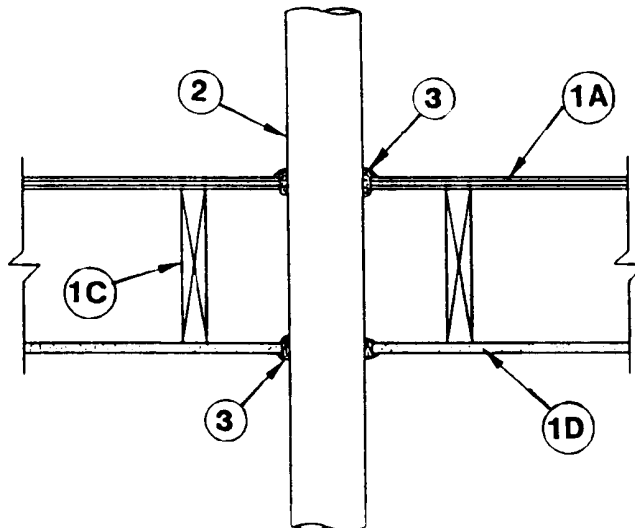


**ULC SYSTEM No. SP365  
(For Horizontal Separation)**

**F and FH Ratings**           – 1 h  
**FT and FTH Ratings**       – 0, 3/4 & 1 h (See Item 2)



**1. Floor-Ceiling Assembly** – The fire-rated floor-ceiling assembly shall be constructed of the materials and in the manner described in the individual combustible construction design in the ULC List of Equipment and Materials, Fire Resistance, and shall include the following construction features.

**(a) Finish Flooring** – 19 mm by 64 mm T & G laid perpendicular to joists or 15.5 mm select sheathing grade T & G phenolic bonded Douglas Fir plywood with face grain perpendicular to joists and joints staggered.

**(b) Sub-Flooring** – 19 mm by 140 mm T & G fastened diagonally to joists or 12.5 mm unsanded sheathing grade phenolic bonded Douglas Fir plywood with face grain perpendicular to joists and joints staggered.

**(c) Wood Joists** – 38 mm by 235 mm spaced 400 OC and firestopped.

**(d) Gypsum Wallboard** – Minimum 12.7 mm thick ULC labelled, installed with long dimension perpendicular to joists and secured as described in the individual floor-ceiling design.

**(e) Joint System** – Paper tape embedded in cementitious compound over joints. Exposed nail or screw heads covered with compound with edges of compound feathered out.

**1.1 Chase Wall** (Not shown, optional) – The through penetrant (Item 2) shall be routed through a fire-rated single, double, or staggered wood stud/gypsum wallboard chase wall constructed of the materials and in the manner specified in the individual Wall and Partition Designs in the ULC List of Equipment and Materials, Fire Resistance, and shall include the following construction features:

**(a) Studs** – Nominal 50 mm x 152 mm or double nominal 50 mm x 102 mm lumber studs.

**(b) Sole Plate** – Nominal 50 mm x 152 mm or parallel 50 mm x 102 mm lumber studs. Maximum annular space is 6.4 mm.

**(c) Top Plate** – The double top plate shall consist of two nominal 50 mm x 152 mm or two sets of parallel 50 mm x 102 mm lumber. Maximum annular space is 6.4 mm.

**(d) Wallboard, Gypsum** – Thickness, type, number of layers and fasteners shall be as specified in individual Wall and Partition Design. When double stud construction is used, each stud cavity containing a pipe (Item 2) shall be lined with wallboard such that the pipe is surrounded on four sides by wallboard.

**2. Pipes and Cables** – The following pipes and cables may be used:

**(a)** Copper pipe, nominal 102 mm OD or smaller, 2.6 mm thick or heavier. Pipe may be covered with 13 mm thick fiberglass or mineral wool pipe insulation, (Item 4).

**(b)** Steel pipe, nominal 169 mm OD or smaller, Schedule 40 or heavier, cast or ductile iron pipe, nominal 169 mm OD or smaller. Pipe may be covered with 13 mm thick fiberglass or mineral wool pipe insulation, (Item 4).

**(c)** Maximum 100 pair 24 AWG type CSA IWC FT4 telephone cable with PVC insulation and jacket material.

**(d)** Type Carol RG11/U coaxial cable with PVC insulation and jacket material.

**(e)** 500 MCM Coreflex RA90 90 XLPE 1000 V cable.

Maximum of one penetrating item to be installed approximately midway between wood joists and centred within opening with an annular space of nominal 6.4 mm. All items to be rigidly supported above or below ceiling-floor assembly.

| Types of Penetrating Item(s)                              | FT and FTH Ratings, h |
|---|-----------------------|
| Copper pipe, insulated (Item 2a)                          | 3/4                   |
| Copper pipe, non-insulated (Item 2a)                      | 0                     |
| Steel, cast or ductile iron pipe, insulated (Item 2b)     | 1                     |
| Steel, cast or ductile iron pipe, non-insulated (Item 2b) | 3/4                   |
| Cable, telephone (Item 2c)                                | 1                     |
| Cable, coaxial (Item 2d)                                  | 1                     |
| Cable, 500 MCM (Item 2e)                                  | 1                     |

**3. Firestop System Component** – (Guide No. 40 U19.13). Type "A/D FIREBARRIER Silicone Sealant" caulk grade applied to annular space between penetrating items to a minimum depth of 29 mm flush with top of finished floor and minimum 13 mm flush with bottom surface in the drywall side. Additional material applied to form a crown of 13 mm minimum around penetrating items on both sides of assembly.

A/D FIRE PROTECTION SYSTEMS INC.

**4. Pipe Insulation** (not shown) – Pipes (Items 2a and 2b) may be wrapped with minimum 13 mm thick ULC labelled pipe insulation with minimum 56 kg/m<sup>3</sup> density. Joints sealed with self-sealing lap tape.