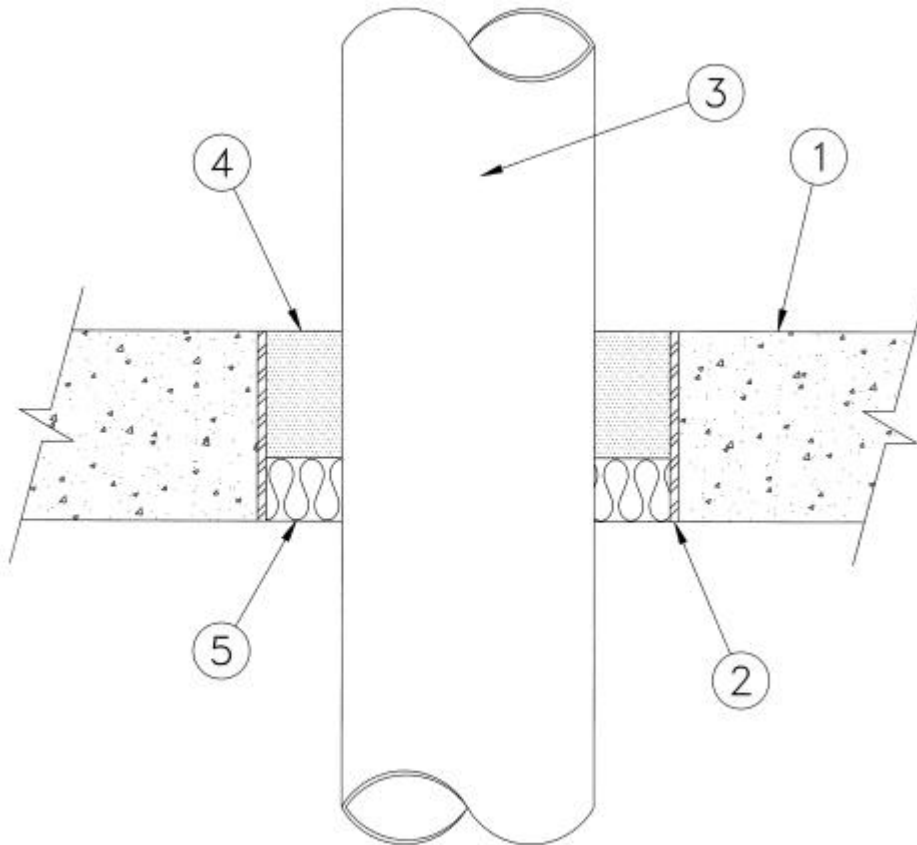


**SYSTEM No. SP424**  
**(For Horizontal or Vertical Separations)**

**F and FH Ratings**           – 3 h  
**FT and FTH Ratings**       – 0 h



**1. Floor or Wall Assembly**– Minimum depth or thickness as necessary for required grade of fire separation but not less than 114 mm normal-density ( $2400\pm 50$  kg/m<sup>2</sup>) concrete. Maximum size of opening 254 mm diameter.

**2. Metallic Sleeve** (optional) – Nominal 254 mm OD (or smaller) Schedule 40 (or heavier) steel sleeve cast or grouted into floor or wall assembly flush with floor or wall surfaces.

**3. Steel Pipe** – Nominal 152 mm OD (or smaller), 3.5 mm wall thickness (or heavier) Copper, Steel Pipe or Conduit centred within opening to give a minimum annular space of 50 mm. Penetrating item to be rigidly supported on both sides of floor or wall assembly.

• **4. Firestop System Components** – (Guide No. 40 U19.13). Type "A/D FIREBARRIER Mortar" compound prepared by mixing mortar powder with water at a ratio of 1 bag (7 kg) of powder to 2.5 kg of water in accordance with the manufacturer's instructions. The mortar compound is trowelled into the opening to a minimum thickness of 76 mm flush with top surface of floor or both surface of wall assembly.

A/D FIRE PROTECTION SYSTEMS INC.

**5. Forming Material** (optional) – Mineral wool insulation installed to prevent leakage of mortar compound while in liquid state fitted tightly against penetrating item and perimeter of opening. If left in place will not affect assigned ratings.