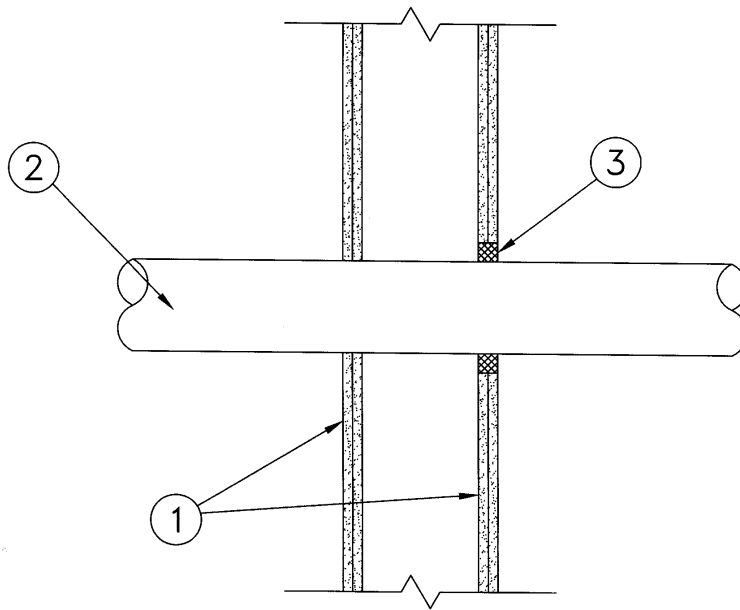


SYSTEM No. SP625
(For Horizontal and Vertical Separations)

F Rating – 1-1/2 h
FH, FT and FTH Ratings – 0 h



1. Wall Assembly – The fire-rated gypsum wallboard/stud wall shall be constructed of the materials and in the manner described in the individual wall and partition design in the ULC List of Equipment and Materials, Fire Resistance, Fire Resistance Ratings, and shall include the following construction features:

(a) Studs – Wall framing consisting of minimum 63 mm wide by 31 mm deep channel, steel studs with 6 mm lip on each flange tip formed from minimum 0.6 mm thick galvanized steel. Steel studs cut 19 mm less in length than the height of the assembly and secured to channel-shaped galvanized steel floor and ceiling tracks with 13 mm long self-drilling, self-tapping screws on both sides of studs. Steel stud spacing not to exceed 600 mm OC.

(b) Gypsum Wallboard – Minimum 12.7 mm thick gypsum wallboard installed vertically in two layers on both sides of stud framing with joints of each layer centred over studs. Inner layer joints on opposite sides of wall staggered one stud. Outer layer joints staggered one stud from inner layer joints.

2. Pipe – Nominal 102 mm OD (or smaller) copper pipe with minimum 2.5 mm wall thickness or nominal 102 mm OD Schedule 10 (or heavier) steel pipe or nominal 102 mm OD EMT. Pipe to be installed near centre of stud cavity width and be rigidly supported on both sides of wall assembly. Pipe to be centred in the through-opening so as to maintain a 19 mm maximum annular space between edge of the opening and penetrating item at one side of the assembly. On the other side of the assembly, the pipe is installed with zero annular space.

• **3. Firestop System Component** – (Guide No. 40 U19.13). "A/D FIREBARRIER Silicone Sealant" caulked into annular space at one side of the assembly to a depth of 25.4 mm. For horizontal installations, sealant caulked into bottom layers of gypsum wallboard.

A/D FIRE PROTECTION SYSTEMS INC.