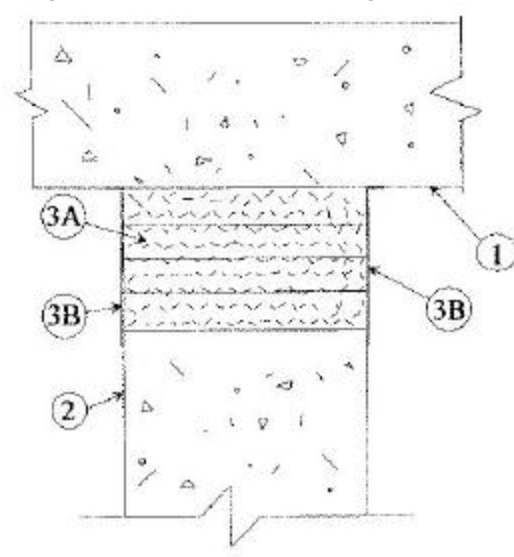


ULC Design No. HW 38
F, FH, FT and FTH Rating - 2 h
Nominal Joint Width - 89 mm
Movement Capabilities – 14.3% Compression or Extension



1. **Floor Assembly** - Minimum 115 mm thick steel-reinforced low-density or normal-density (1600 to 2400 kg/m^3) structural concrete.
2. **Wall Assembly** - Minimum 115 mm thick steel-reinforced low-density or normal density (1600 to 2400 kg/m^3) structural concrete. Wall may also be constructed of nominal 200 mm thick concrete block.
3. **Joint System - Maximum separation between bottom of floor and top of wall (at time of installation of joint system) is 89 mm. The joint system is designed to accommodate a maximum 14.3% compression or extension from its installed width.** The joint system consists of a forming material and a firestop material as follows:

(a) Firestop System Component - (Guide No. 40 U19.13). Minimum 115 mm thickness of minimum 64 kg/m^3 "A/D FIREBARRIER Mineral Wool" batt insulation installed in joint opening as a permanent form. Pieces of batt cut into strips with width equal to the thickness of the wall and installed horizontally, edge-first into joint opening, such that batt sections are compressed min 30% in thickness and such that the compressed sections are flush each surface of wall. Adjoining lengths of batt to be tightly-butted with butted seams spaced minimum 610 mm apart along the length of the joint.

A/D FIRE PROTECTION SYSTEMS INC.

(b) Firestop System Component - (Guide No. 40 U19.13). Minimum 3.2 mm thickness of "A/D FIREBARRIER Seal N/S" material sprayed or brushed on each side of wall to completely cover mineral wool and overlap a minimum 13mm onto both side of wall.

A/D FIRE PROTECTION SYSTEMS INC.