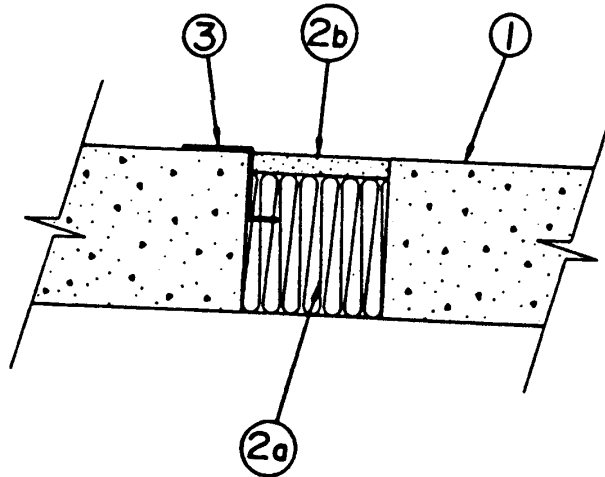


**SYSTEM No. JF29
(For Horizontal or Vertical Separations)**

- F Rating** - 3 h
FH Rating - 0 & 3 h (See Item 1)
FT and FTH Ratings - 3/4 & 1 h (See Item 2)



1. Floor Assembly – Minimum depth as necessary for required grade of fire separation but not less than 75 mm. Normal-density ($2400 \pm 50 \text{ kg/m}^3$) or low-density ($1760 \pm 50 \text{ kg/m}^3$) concrete. Maximum width of opening 135 mm. For an FH rating of 3 h, maximum width of opening is 100 mm.

• **2. Firestop System Components** – (Guide No. 40 U19.13).

- (a) Type "A/D FIREBARRIER Mineral Wool" compressed 33% (minimum), installed in one or two width layers at minimum depth of 75 mm. Minimum 5 mm deep space to be left above wool for sealant (Item 2b). Mineral wool may extend 5 mm below underside of floor when thickness of floor is 75 mm.
- (b) For horizontal separations only, Type "A/D FIREBARRIER Seal", applied to a minimum depth of 5 mm, or "A/D FIREBARRIER Silicone Sealant" caulk, or "A/D FIREBARRIER Silicone Sealant SL", or "A/D FIREBARRIER Joint Sealant SL", applied over mineral wool (Item 2a) to a minimum depth of 6.4 mm.

For vertical separations, Type "A/D FIREBARRIER Silicone Sealant" caulk, applied to a depth of 6.4 mm or "A/D FIREBARRIER Seal NS" applied to a wet depth of 5 mm over mineral wool symmetrically to both sides of wall assembly.

FT and FTH Ratings, h	Required Min Depth of Insulation, mm	Required Min Depth of Concrete Slab, mm
3/4	75	75
1	100	114

A/D FIRE PROTECTION SYSTEMS INC.

3. Clips (optional) – "Z"-shaped clips may be inserted into insulation (Item 2a) during installation and hung on concrete slab at opening.