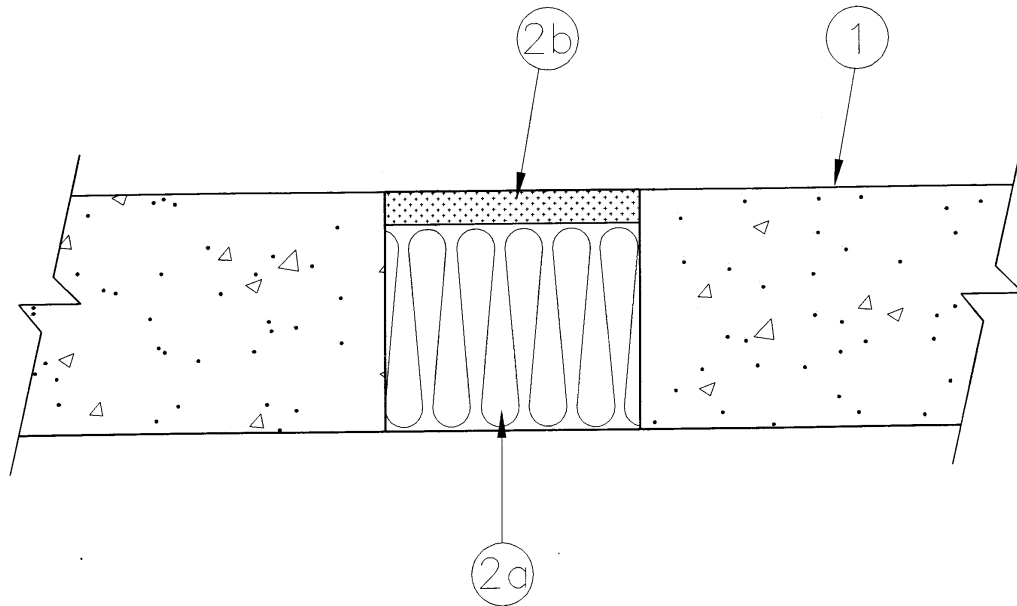


**SYSTEM No. JF35  
(For Horizontal Separation)**

**F Rating** – 3 h  
**FT Rating** – 3/4 & 2 h (See Item 1)  
**FH Rating** – 0 & 3 h (See Item 1)  
**FTH Rating** – 0 & 2 h (See Item 1)



**1. Floor** – Normal-density ( $2400 \pm 50 \text{ kg/m}^3$ ) concrete. Minimum depth as necessary for required grade of fire separation but not less than 114 mm. Maximum width of opening 135 mm.

The FH, FT and FTH ratings depend on the width of openings as follows:

Max Opening Size, mm	Ratings, h		
	FH	FT	FTH
75	3	2	2
100	3	3/4	3/4
135	0	3/4	0

**2. Firestop System Components** – (Guide No. 40 U19.13).

- (a) Type "A/D FIREBARRIER Mineral Wool" compressed 33% (minimum) installed in one or two width layers to a minimum depth of 100 mm.
- (b) Type "A/D FIREBARRIER Spray Seal" sprayed on top of mineral wood insulation at the minimum rate of  $4.5 \text{ kg/m}^2$ . Material to overlap concrete edges by minimum 25 mm.

A/D FIRE PROTECTION SYSTEMS INC.