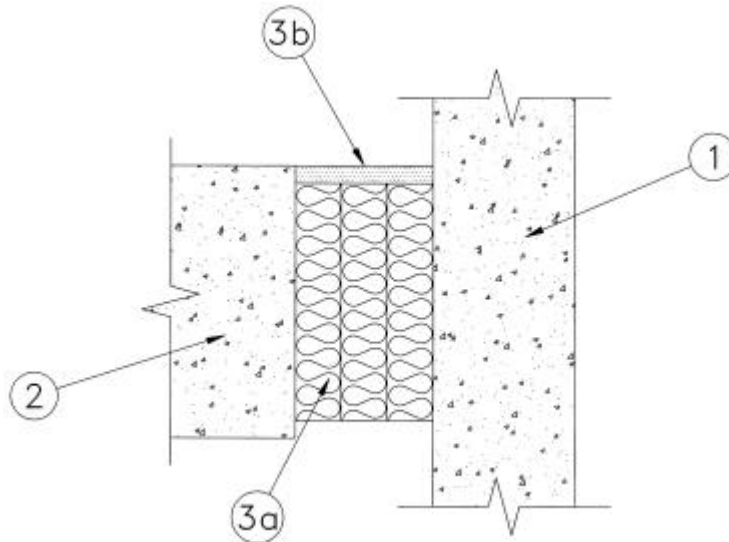


**SYSTEM No. JF94**  
**(For Horizontal or Vertical Separations)**

<b>F, FT, FH and FTH Ratings</b>	<b>-2h</b>
<b>Nominal Joint Width</b>	<b>-84 mm</b>
<b>Movement Capabilities</b>	<b>-20% Compression or Extension</b>



**1. Wall Assembly** – Minimum 115 mm thick reinforced low-density or normal-density (1600 to 2400 kg/m<sup>3</sup>) structural concrete. Wall may also be constructed of minimum 200 mm thick concrete blocks and having a rating compatible with the firestop system.

**2. Floor Assembly** – Minimum 115 mm thick reinforced low-density or normal-density (1600 to 2400 kg/m<sup>3</sup>) structural concrete.

• **3. Joint System** – Maximum separation between edge of floor and face of wall (at time of installation of joint system) is 84 mm. The joint system is designed to accommodate a maximum 20% compression or extension from it's installed width. The joint system shall consist of the following:

**(a) Firestop System Component** – (Guide No. 40 U19.13). Minimum 64 kg/m<sup>3</sup> "A/D FIREBARRIER Mineral Wool" insulation installed in joint opening as a permanent form. Pieces of batt cut to minimum width of 102 mm and installed edge-first into joint opening, parallel with joint direction, such that batt sections are compressed minimum 33% in thickness and that the compressed batt sections are recessed from top surface of the floor as required to accommodate the required thickness of fill material. Adjoining lengths of batt to be tightly-butted with butted seams spaced minimum 610 mm apart along the length of the joint.

A/D FIRE PROTECTION SYSTEMS INC.

**(b) Firestop System Component** – (Guide No. 40 U19.13). Minimum 6.4 mm thickness of "A/D FIREBARRIER Silicone Sealant" material applied within the joint, flush with top surface of floor.

A/D FIRE PROTECTION SYSTEMS INC.