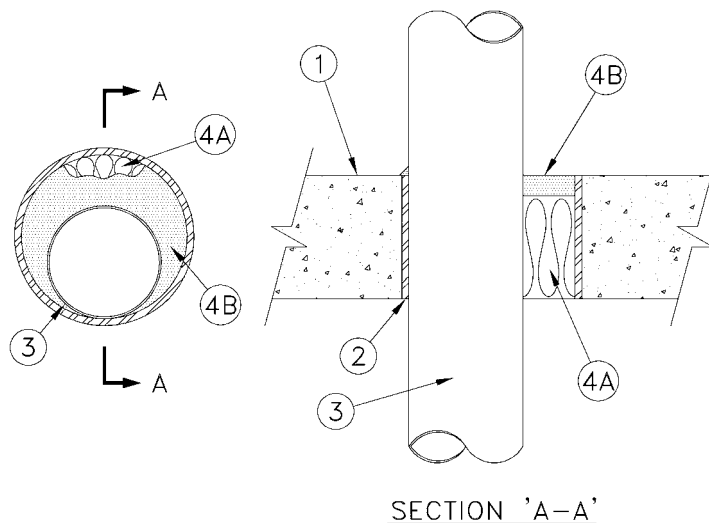


SYSTEM No. SP1076
(For Horizontal or Vertical Separations)
F and FH Ratings - 2 h
FT and FTH Ratings - 0 h



1. Floor or Wall Assembly – Minimum 64 mm thick, reinforced low-density or normal-density (1600 to 2400 kg/m³) structural concrete. Floor may also be constructed of minimum 152 mm thick hollow-core precast concrete units having a fire resistance rating equal to or better than that of the firestop system. Wall may also be constructed of nominal 200 mm thick concrete blocks. For opening in concrete block wall, concrete or mortar shall be used to create a solid surround to the opening. Maximum diameter of opening is 666 mm. When precast concrete units are used, maximum diameter of opening is 178 mm.

2. Steel Sleeve (optional) – Nominal 660 mm diameter (or smaller), Schedule 10 (or heavier) steel pipe cast or grouted into floor or wall assembly flush with floor or wall surfaces.

3. Through-Penetrants – One metallic pipe, or tubing rigidly supported on both sides of floor or wall assembly. The annular space shall be a minimum 0 mm (point contact) to a maximum 56 mm. The following types and sizes of metallic pipes, conduits or tubing may be used:

(a) **Copper Tubing** – Nominal 150 mm diameter (or smaller), Type M (or heavier) copper tube.

(b) **Steel Pipe** – Nominal 600 mm diameter (or smaller), Schedule 10 (or heavier) steel pipe.

(c) **Conduit** – Nominal 150 mm diameter (or smaller) steel electrical metallic tubing (EMT).

(d) **Iron Pipe** – Nominal 600 mm diameter (or smaller) cast or ductile iron pipe.

4. Firestop System – The firestop system shall consist of the following:

(a) **Batts and Blankets** – Minimum 72 kg/m³ mineral wool batt insulation, tightly compressed and firmly packed into opening as a permanent form to a minimum depth of 57 mm. Material to be recessed from top surface of floor or from both surfaces of wall as required to accommodate the required thickness of sealant.

• (b) **Firestop System Components** – XHJZC (Guide No. 40 U19.13). Minimum 6.4 mm thickness of A/D FIREBARRIER Intumescent Caulk applied within the annulus flush with top surface of floor or with both surfaces of wall. In floors constructed of hollow-core precast concrete units, caulk installed symmetrically on both sides of floor. Additional material installed to form a crown of 6.4 mm where pipe contacts edge of opening. For vertical installations, caulk to be applied symmetrically on both sides of wall.

A/D FIRE PROTECTION SYSTEMS INC.