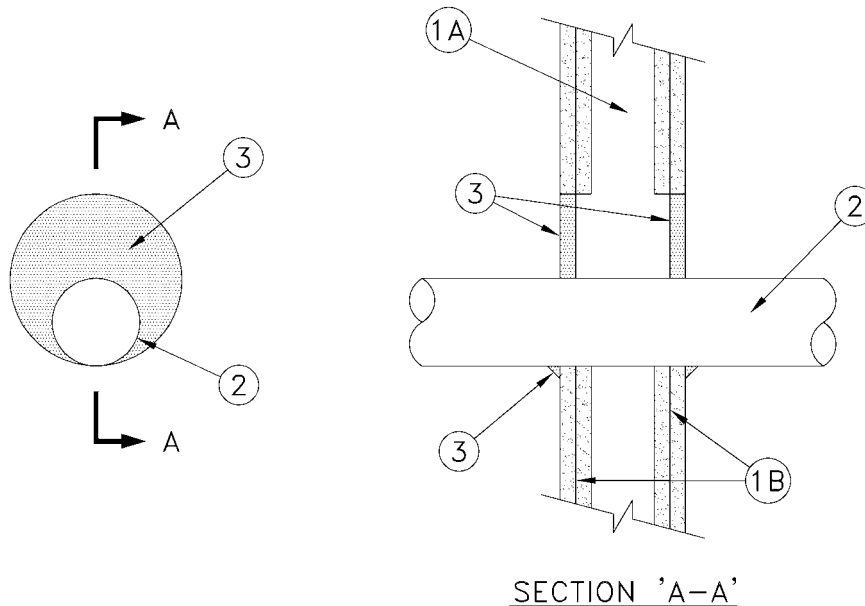


ULC System No. SP1090

(For Vertical Separations)

F and FH Ratings — 1 and 2 h (See item 1)

FT and FTH Ratings — 0 h



1. Wall Assembly –The fire-rated gypsum wallboard/stud wall assembly shall be constructed of the materials and in the manner described in the ULC Fire Resistance Directory and shall include the following construction features:

A.Studs –Wall framing may consist of either wood studs or steel channel studs. Wood studs to consist of nominal 38 by 89 mm lumber spaced 406 mm OC. Steel studs to be minimum 92 mm wide and spaced maximum 610 mm OC.

B.Wallboard, Gypsum – 16 mm thick, 1220 mm wide with square or tapered edges. The gypsum wallboard type, thickness, number of layers, fastener type and sheet orientation shall be as specified in the individual wall or partition design..Maximum diameter of opening is 143 mm.

The hourly F and FH Rating of the firestop system is equal to the hourly fire rating of the wall assembly in which it is installed.

2. Through Penetrant –One metallic pipe, conduit or tubing to be installed either concentrically or eccentrically within the firestop system. The annular space between pipe, conduit or tubing and periphery of opening shall be minimum 0 mm (point contact) to maximum 38 mm. Pipe, conduit or tubing to be rigidly supported on both sides of wall assembly. The following types and sizes of metallic pipes, conduits or tubing may be used:

SP1090 Continued...

- A. **Steel Pipe** –Nominal 200 mm diameter(or smaller) Schedule 5 (or heavier) steel pipe.
 - B. **Iron Pipe** –Nominal 200 mm diameter (or smaller) cast or ductile iron pipe.
 - C. **Conduit** –Nominal 100 mm diameter (or smaller) steel electrical metallic tubing or steel conduit.
 - D. **Copper Tubing** –Nominal 100 mm diameter (or smaller) Type L (or heavier) copper tubing.
 - E. **Copper Pipe** –Nominal 100 mm diameter (or smaller) Regular (or heavier) copper pipe.
- **3. Firestop System Components** – (Guide No.40U19.13) (XHJZC) Minimum 16 mm thickness of A/D FIREBARRIER Intumescent Caulk applied within annulus, flush with both surfaces of wall. At the point contact location between through penetrant and gypsum wallboard, a minimum 6.4 mm diameter bead of caulk shall be applied at the gypsum wallboard/through penetrant interface on both surfaces of wall.

A/D FIRE PROTECTION SYSTEMS INC