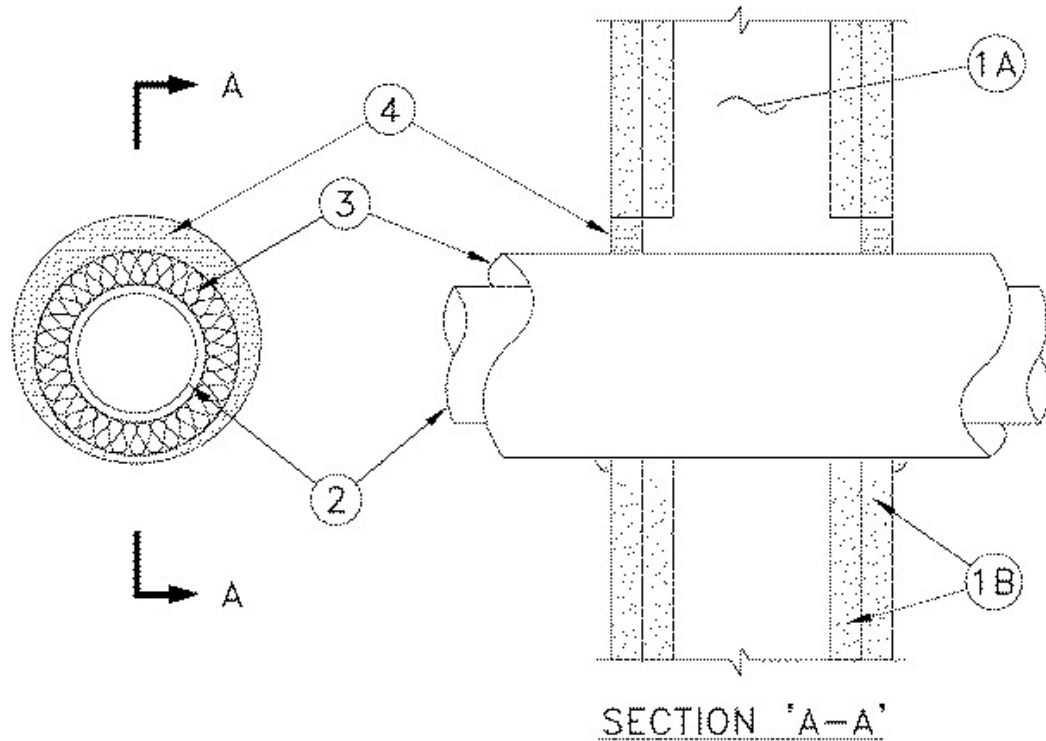


## ULC System No. SP1091

August 01, 2005

(For Vertical Separations)

F and FH Ratings — 1 and 2 h (See item 4)  
FT and FTH Ratings - 1/2 and 1 h (See item 4)



**1. Wall Assembly** — The 1 or 2 h fire-rated gypsum wallboard/stud wall assembly shall be constructed of the materials and in the manner specified in the ULC Fire Resistance Directory and shall include the following construction features:

(a) **Studs** — Wall framing may consist of either wood studs or steel channel studs. Wood studs to consist of nominal 38 mm by 89 mm lumber spaced 406 mm OC. Steel studs to be minimum 92 mm wide and spaced maximum 610 mm OC.

(b) **Gypsum Board** — Nominal 16 mm thick, 1220 mm wide with square or tapered edges. The gypsum wallboard type, number of layers, fastener type and sheet orientation shall be as specified in the individual Wall and Partition Design. Maximum diameter of opening is 308 mm.

**The hourly Rating of the firestop system is equal to the hourly fire rating of the wall in which it is installed.**

**2. Through Penetrants** — One metallic pipe or tubing to be installed either concentrically or eccentrically within the firestop system. Pipe or tubing to be rigidly supported on both sides of wall assembly. The following types and sizes of metallic pipes or tubing may be used:

(a) **Steel Pipe** — Nominal 200 mm diameter (or smaller) Schedule 10 (or heavier) steel pipe.

(b) **Copper Tubing** — Nominal 100 mm diameter (or smaller) Type L (or heavier) copper tubing.

(c) **Copper Pipe** — Nominal 100 mm diameter (or smaller) Regular (or heavier) copper pipe.

**3. Pipe Covering** — Nominal 25 mm thick hollow cylindrical heavy density (minimum 56 kg/m<sup>3</sup>) glass fibre units jacketed on the outside with an all service jacket. Longitudinal joints sealed with metal fasteners or factory-applied self-sealing lap tape. Transverse joints sealed with metal fasteners or with butt tape supplied with the product. Annular space between pipe covering and periphery of opening to be minimum 0 mm (point contact) to maximum 38 mm.

**4. Firestop System Component** — (Guide No. 40 U19.13) XHJZC — Minimum 16 mm thickness of FIREBARRIER Intumescent Caulk applied within the annular space, flush with each surface of wall. A minimum 6.4 mm diameter bead of caulk shall be applied to the pipe insulation/ wallboard interface at the point contact location on both sides of wall.

Wall Ratings, h	Penetration Type	Ratings, h			
		F	FH	FT	FTH
2	Steel pipe & copper pipe and tubing	2	2	1	1
1	Steel pipe & copper pipe and tubing	1	1	1/2	1/2

**A/D FIRE PROTECTION SYSTEMS INC**