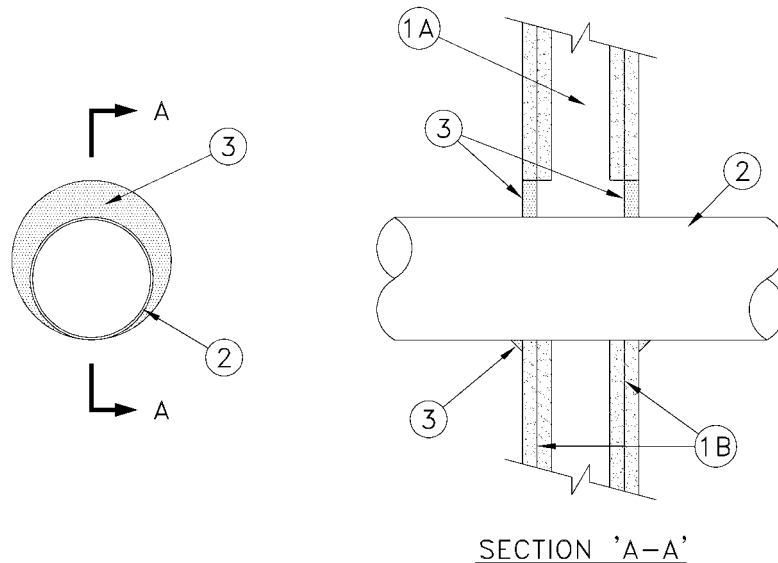


**ULC System No. SP1092**

**(For Vertical Separations)**

**F and FH Ratings — 1 and 2 h (See Item 1)**

**FT and FTH Ratings — 0 h**



**1. Wall Assembly** — The 1 or 2 hr fire-rated gypsum board/steel stud wall assembly shall be constructed of the materials and in the manner described in the ULC Fire Resistance Directory and shall include the following construction features:

**A. Studs** —Wall framing may consist of either wood studs or steel channel studs. Wood studs to consist of nominal 38 by 89 mm lumber spaced 406 mm OC. Steel studs to be minimum 92 mm. wide and spaced maximum 610 mm OC.

**B. Gypsum Board** — Thickness, type, number of layers and fasteners as required in the individual Wall and Partition Design. Maximum diameter of opening is 165 mm.

**The hourly F and FH Rating of the firestop system is equal to the hourly fire rating of the wall assembly in which it is installed.**

**2. Steel Duct** — Nominal 127 mm diameter (or smaller), 0.30 mm thick (or heavier) galvanized steel duct installed concentrically or eccentrically within opening. Annular space between duct and periphery of opening to be minimum 0 mm (point contact) to maximum 38 mm. Duct to be rigidly supported on both sides of wall assembly.

• **3. Firestop System Components** — (Guide No. 40 U19.13) XHJZC— Minimum 16 mm thickness of A/D FIREBARRIER Intumescent Caulk applied within annulus, flush with both surfaces of wall. An additional minimum 6.4 mm diameter bead of caulk applied to the duct/gypsum board interface at the point contact locations on both sides of wall.

**A/D FIRE PROTECTION SYSTEMS INC**