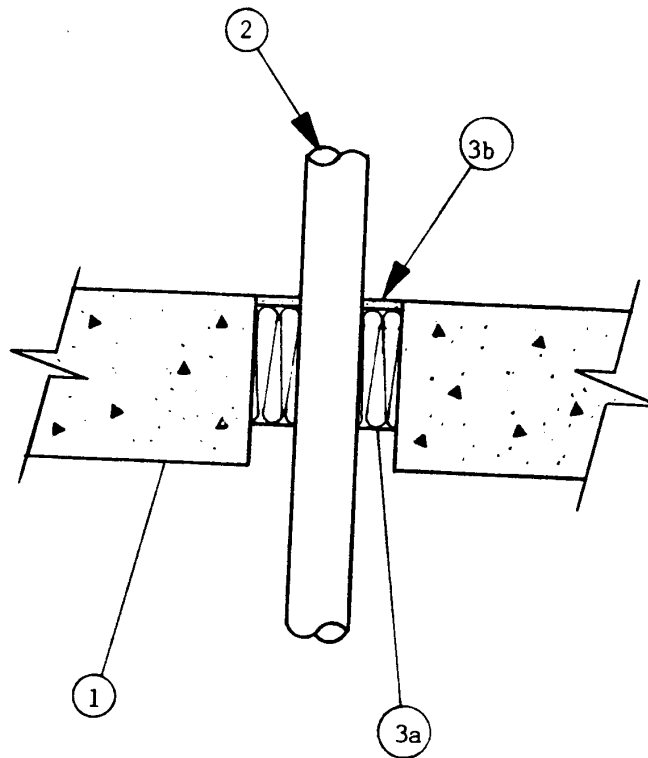


SYSTEM No. SP160
(For Horizontal or Vertical Separations)

F and FH Ratings – 3 h
FT and FTH Ratings – 1 & 2 h (See Item 2)



1. Floor or Wall – Minimum depth or thickness as necessary for required grade of fire separation but not less than 150 mm. Normal density ($2400 \pm 50 \text{ kg/m}^3$) concrete. Maximum size of opening 120 mm by 120 mm.

2. Pipe – Nominal 50 mm diameter (or smaller) Schedule 40 (or heavier) steel pipe, or cast iron or ductile iron pipe, reliably supported above the through-opening. If no pipes penetrate the assembly, FT and FTH ratings are 2 h.

Type of Penetrating Item	FT and FTH Rating, h
--------------------------	----------------------

No penetrating item	2
Item 2	1

3. Firestop System Components – (Guide No. 40 U19.13).

- (a) Type "A/D FIREBARRIER Mineral Wool" to be compressed 33% (minimum) between pipes and edge of opening. Minimum depth of 100 mm. Minimum 6.4 mm deep space to be left above mineral wool for sealant (Item 3b).

- (b) Type "A/D FIREBARRIER Silicone Sealant" applied over mineral wool (Item 3a) to a minimum depth of 6.4 mm. For vertical separations, apply to minimum depth of 6.4 mm on both sides of the assembly.
- (c) For horizontal separations only, Type "A/D FIREBARRIER Silicone Sealant SL" applied over insulation (Item 3a) to a minimum depth of 6.4 mm flush with the top surface of the slab.

A/D FIRE PROTECTION SYSTEMS INC.