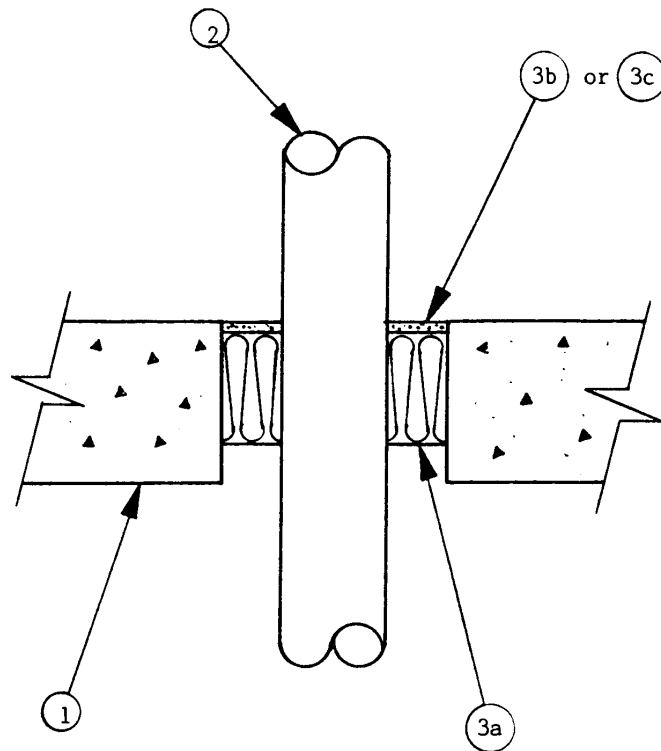


**SYSTEM No. SP162**  
**(For Horizontal or Vertical Separations)**

**F and FH Ratings** – 3 h  
**FT and FTH Ratings** – 0, 1, 2 & 3 h (See Item 3)



**1. Floor or Wall** – Minimum depth or thickness as necessary for required grade of fire separation but not less than 150 mm. Normal density ( $2400 \pm 50 \text{ kg/m}^3$ ) concrete. Maximum size of opening 205 mm diameter.

**2. Pipe** – Nominal 90 mm diameter (or smaller), copper, Schedule 40 (or heavier) steel pipe, or cast or ductile iron pipe, reliably supported above the through-opening. Minimum space of 25 mm to be maintained between pipe and perimeter of opening.

**3. Firestop System Components** – (Guide No. 40 U19.13).

(a) Type "A/D FIREBARRIER Mineral Wool" to be compressed 33% (minimum) between pipes and perimeter of opening, minimum depth of 100 mm. Minimum 6.4 mm deep space to be left above mineral wool for sealant (Item 3b or 3c).

(b) Type "A/D FIREBARRIER Silicone Sealant SL" applied over mineral wool (Item 3a) to a minimum depth of 6.4 mm. If no pipes penetrate the assembly, FT and FTH Ratings are 2 h for horizontal separations only.

SP162 continued

---

<b>Type of Penetrating Item</b>	<b>FT and FTH Rating, h</b>
No penetrating item	2
Item 2	0

---

OR

(c) Type "A/D FIREBARRIER Silicone Sealant" applied over mineral wool (Item 3a) to a minimum depth of 6.4 mm. For vertical separations, apply to minimum depths of 6.4 mm on both sides of assembly. When no pipes penetrate the assembly, FT and FTH Ratings are 1 h for horizontal separations and 3 h for vertical separations (sealant on both sides).

---

<b>Type of Penetrating Item</b>	<b>FT and FTH Rating, h</b>
No penetrating item	1, 3*
Item 2	0

---

\* vertical separations only

A/D FIRE PROTECTION SYSTEMS INC.