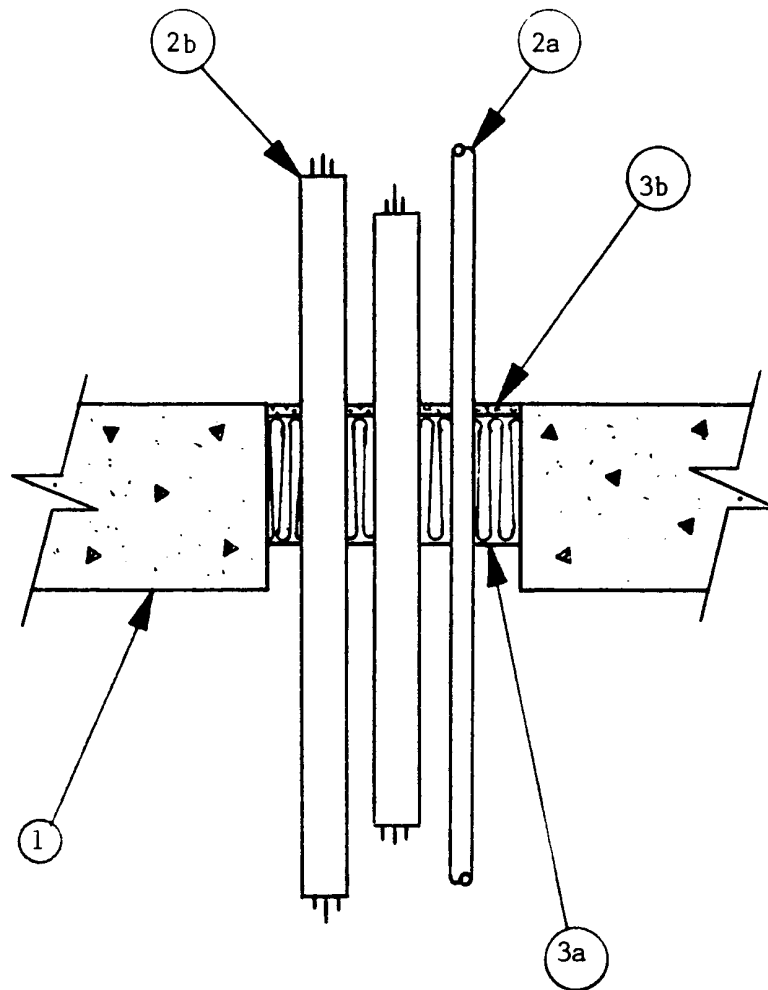


**SYSTEM No. SP167**  
**(For Horizontal Separation)**

**F and FH Ratings**        - 3 h  
**FT and FTH Ratings**    - 0 & 2 h (See Item 2)



**1. Floor** – Minimum depth as necessary for required grade of fire separation but not less than 150 mm. Normal density ( $2400 \pm 50 \text{ kg/m}^3$ ) concrete. Maximum size opening 175 mm by 210 mm.

**2. Pipes and Cables** –

- (a) Nominal 13 mm diameter copper pipes. A maximum of two pipes spaced 13 mm apart and no closer than 25 mm from edge of opening or cables (Item 2b).
- (b) A maximum of two cables 38 mm diameter, Type "500 MCM COREFLEX II RA90 XLPE", or 32 mm diameter, Type "4 AWG/4 XLPE TECK 90HL FIREX - 11 FT4 1000 V" spaced 25 mm apart and 25 mm from edge of opening, or pipes (Item 2a).

SP167 continued...

Type of Penetrating Item(s)	FT and FTH Ratings, h
No penetrations	2
Item 2a	0
Item 2b	0

• **3. Firestop System Components** – (Guide No. 40 U19.13).

(a) Type "A/D FIREBARRIER Mineral Wool" compressed 33% (minimum) into all voids to minimum depth of 100 mm. Minimum 6.4 mm deep space to be left above mineral wool for sealant (Item 3b).

(b) Type "A/D FIREBARRIER Silicone Sealant SL" applied over mineral wool (Item 3a) to a minimum depth of 6.4 mm.

A/D FIRE PROTECTION SYSTEMS INC.