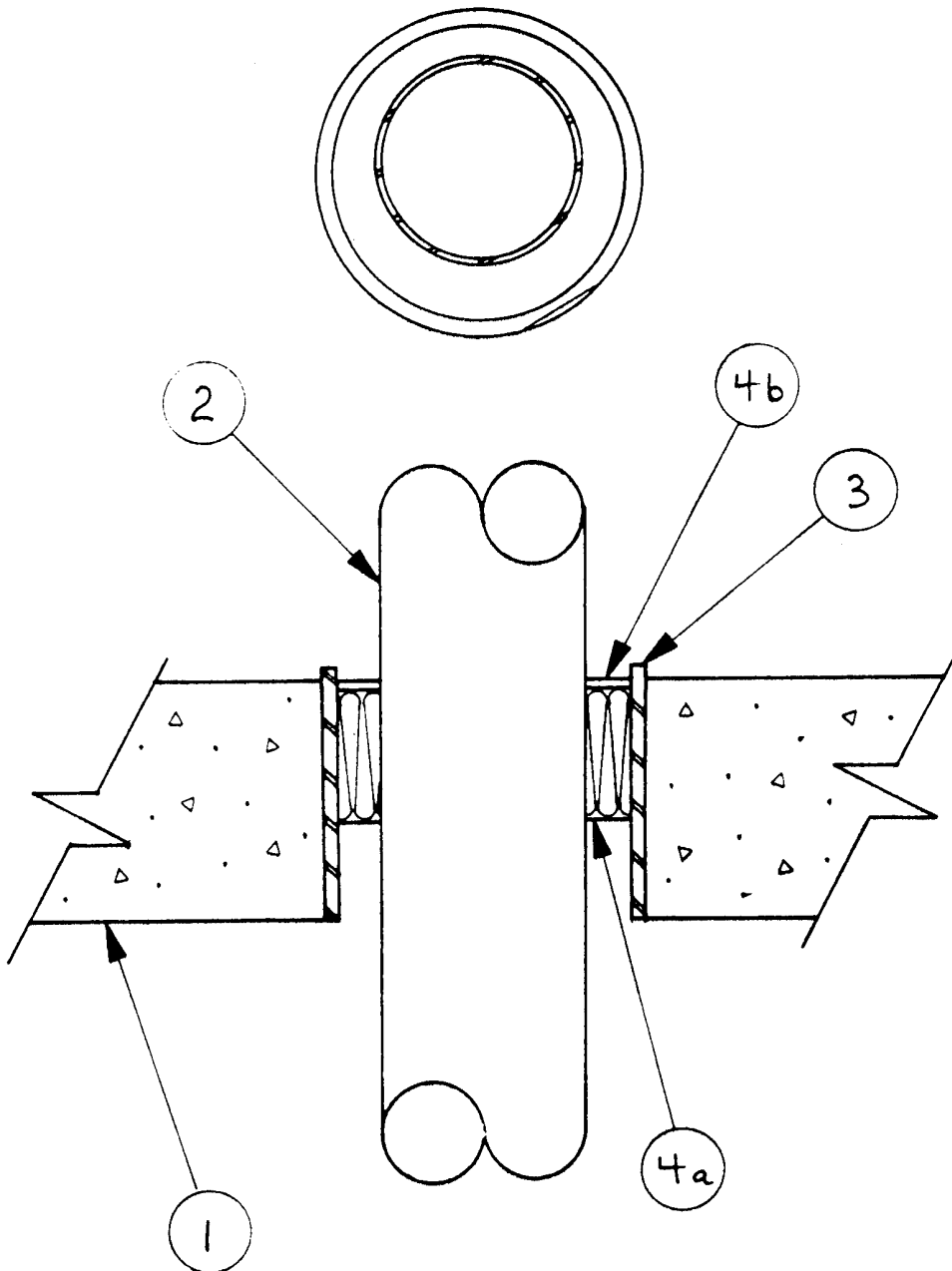


SYSTEM No. SP219
(For Horizontal Separation)

F Rating – 3 h
FT Rating – See Item 4
FH Rating – 0 & 3 h (See Item 3)
FTH Rating – 0 & 3 h (See Item 4)



1. Floor – Normal-density concrete, 114 mm thick minimum. Maximum size of circular opening 283 mm diameter.

SP219 continued...

2. Pipe – Nominal 180 mm diameter (or smaller), Schedule 40 (or heavier) steel pipe, or cast or ductile iron pipe, reliably supported above the through-opening. Minimum space of 25 mm to be maintained between pipe and perimeter of opening.

3. Steel Pipe Sleeve (optional) – Schedule 40 steel pipe sleeve, 283 mm OD (or smaller) cast or grouted into floor or wall assembly flush with floor or wall surfaces. When pipe sleeve is used, FH rating is 0 h.

• **4. Firestop System Components** – (Guide No. 40 U19.13).

(a) Type "A/D FIREBARRIER Mineral Wool" to be compressed 33% (minimum) between pipes and perimeter of opening, minimum depth of 100 mm. A minimum 5 mm deep space to be left above mineral wool for seal (Item 4b).

(b) For horizontal separations, Type "A/D FIREBARRIER Seal" applied over mineral wool (Item 4a) to a minimum wet depth of 5 mm, or Type "A/D FIREBARRIER Silicone Sealant SL" to a depth of 6.4 mm. If no pipe penetrates the assembly, FT rating is 3 h.

For vertical separations, Type "A/D FIREBARRIER Seal NS" applied over mineral wool (Item 4a) to a minimum wet depth of 5 mm, or Type "A/D FIREBARRIER Silicone Sealant" to a depth of 6.4 mm, symmetrically to both sides of the assembly. If no pipe penetrates the assembly, FT rating is 3 h.

Type of Penetrating Item	Ratings, h	
	FH	FT and FTH
No penetrating item or steel sleeve	3	3
Item 2, steel or cast or ductile iron pipe	3	0

A/D FIRE PROTECTION SYSTEMS INC.