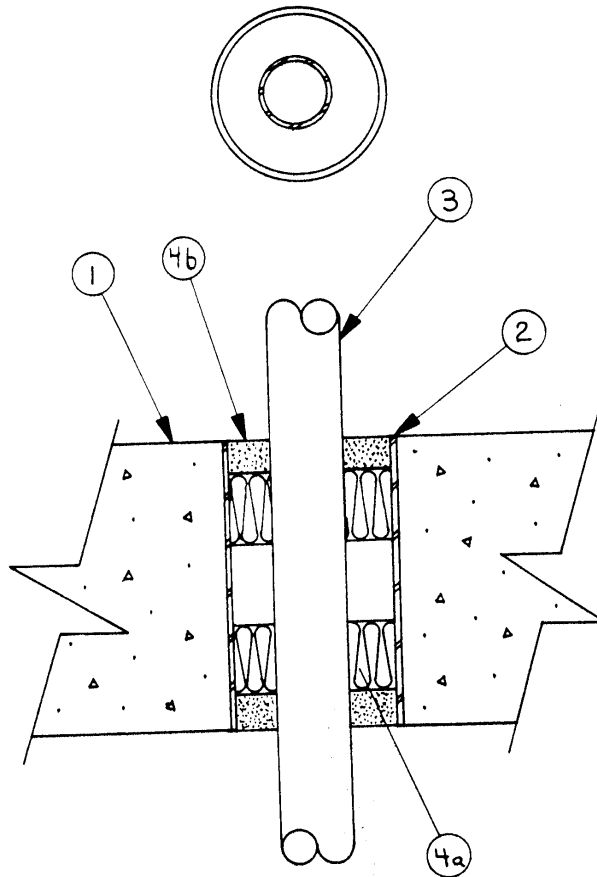


SYSTEM No. SP230
(For Horizontal or Vertical Separations)

F, FT, FH and FTH Ratings – 3 h



1. Floor or Wall – Normal-density concrete wall or slab, 178 mm thick. Maximum size of opening 75 mm diameter.

2. Steel Pipe Sleeve (optional) – Schedule 40 steel pipe sleeve, 75 mm OD (or smaller) cast or grouted into floor or wall assembly flush with floor or wall surfaces.

3. Steel Pipe – Steel pipe conduit, 31.5 mm OD (or smaller), reliably supported.

4. Firestop System Components – (Guide No. 40 U19.13).

(a) Type "A/D FIREBARRIER Mineral Wool" installed in two 50 mm thick layers with minimum 38 mm air space symmetrically with respect to mid-depth of floor or wall. Uncompressed width of material to be 33% wider than width of opening to be filled. 38 mm thick maximum layer of foamed polyurethane sealant may be installed between the two layers of mineral wool.

(b) Type "A/D FIREBARRIER Mortar" mixed with water in accordance with manufacturer's instructions and placed over insulation (Item 4a) to a minimum thickness of 20 mm on both sides of opening.

A/D FIRE PROTECTION SYSTEMS INC.