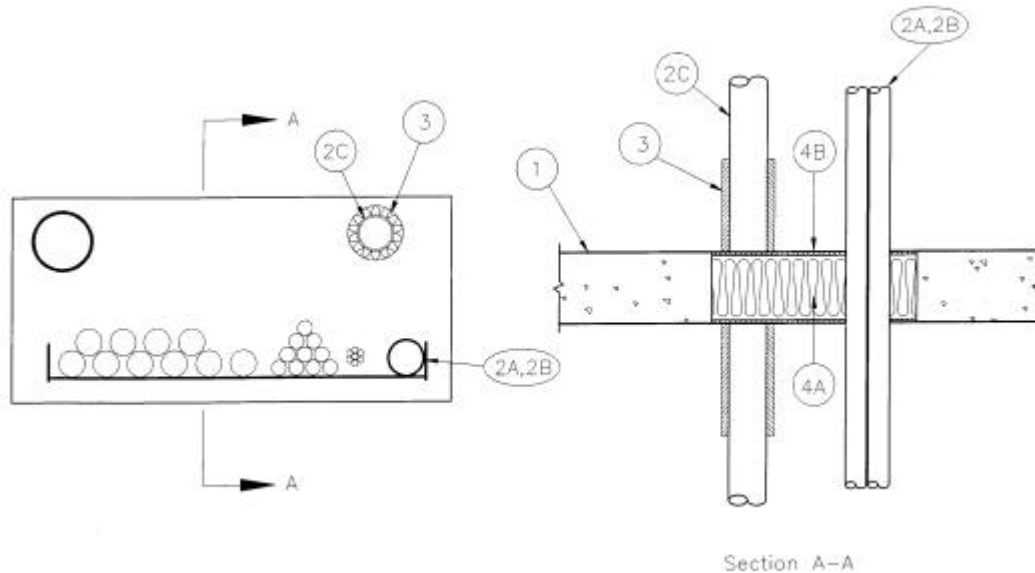


SYSTEM No. SP395
(For Horizontal or Vertical Separations)

F Rating – 1-1/2 h
FH Rating – 0, 1-1/2 (See Item 2)
FT and FTH Ratings – 0 & 1 h (See Item 2)



1. Wall or Floor Assembly– Minimum depth or thickness as required for grade of fire separation but not less than 114 mm. Normal-density ($2400\pm 50 \text{ kg/m}^3$) or low-density ($1760\pm 50 \text{ kg/m}^3$) concrete floor or wall. Wall can also be constructed of minimum 200 mm concrete block. Maximum size of opening 300 mm by 600 mm. For opening in concrete block wall, concrete or mortar shall be used to create a solid surround to the opening.

2. Pipes, Cables and Cable Tray– All penetrating items to be reliably supported.

- (a) Maximum size 90 mm by 450 mm steel ladder cable tray spaced minimum 50 mm from perimeter of opening. Maximum cable and conduit loading not to exceed 50% by area of cable tray and made up of the following groupings:
- (i) A maximum of 10 (ten) 500 MCM COREFLEX II RA90 (XLPE) FT4 cable (or smaller).
 - (ii) Individual or bundles of a maximum of 7 (seven) 24 AWG, 100 pair telephone CSA Type IWC cables; maximum OD of 18 mm. A 13 mm minimum space between bundles or other penetrating items.
 - (iii) Individual or bundles of a maximum of 7 (seven) CAROL C1160 RG 11/U coaxial cables; maximum 10.3 mm OD. A 13 mm space between cables, bundles, or other penetrating items.
 - (iv) Maximum of one 55 mm OD (or smaller), 1.75 mm minimum wall thickness steel conduit.
- (b) Maximum of one nominal 105 mm OD (or smaller) copper or steel pipe with minimum 2.39 mm wall thickness spaced 25 mm minimum from edge of opening and 50 mm minimum from other penetrating items.

SP395 continued...

- (c) Nominal 80 mm OD (or smaller) copper or steel pipe with minimum 1.38 mm wall thickness insulated with Pipe Insulation (Item 3) and spaced 50 mm from edge of opening and other penetrating items.

Type of Penetrating Item	Ratings, h	
	FH	FT and FTH
Cables (Item 2a(i))	1-1/2	0
(Item 2a(ii))	1-1/2	0
(Item 2a(iii))	1-1/2	1
Pipe (Item 2a(iv))	1-1/2	0
(Item 2b)	0	0
(Item 2c)	1-1/2	0

3. Pipe Insulation – Copper or steel pipe (Item 2c) to be wrapped with minimum 25 mm thick ULC labelled pipe insulation; minimum density 56 kg/m³. No pipe insulation joints to be closer than 300 mm to floor or wall surface.

• **4. Firestop System Components** – (Guide No. 40 U19.13).

- (a) Type "A/D FIREBARRIER Mineral Wool" insulation to be compressed 33% (minimum) between pipes and edge of opening. Minimum depth of 100 mm. Minimum 6.4 mm deep space to be left above mineral wool for sealant (Item 4b).
- (b) Type "A/D FIREBARRIER Silicone Sealant" applied over mineral wool (Item 4a) to a minimum depth of 6.4 mm on both sides of the assembly.

A/D FIRE PROTECTION SYSTEM INC.