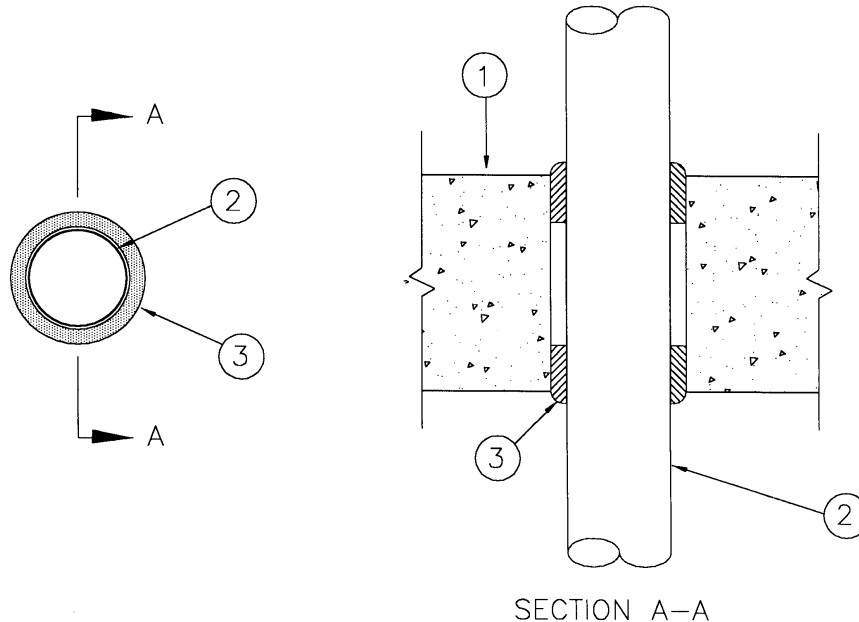


**SYSTEM No. SP421  
(For Horizontal Separation)**

**F Rating** – 2 h  
**FT, FH and FTH Ratings** – 0 h



**1. Floor Assembly** – Minimum depth or thickness as necessary for required grade of fire separation but not less than 114 mm normal-density (2400±50 kg/m<sup>2</sup>) concrete. Minimum 204 mm thick hollow precast concrete floor having a fire resistance rating equal to or exceeding that of the system.

**2. Pipes and Cables** – All pipes and cables rigidly supported and centred in the opening so as to maintain an annular space of 6.4 mm between the edges of opening and penetrating item. Penetrating items to be spaced minimum 300 from other penetrating items.

- (a) Nominal 30 mm OD (or smaller), steel conduit with minimum 1.5 mm wall thickness.
- (b) Nominal 169 mm OD (or smaller), Schedule 40 steel pipe.
- (c) Nominal 105 mm OD (or smaller), copper pipe with minimum 2.5 mm wall thickness.
- (d) Nominal 80 mm OD (or smaller), copper pipe with minimum 1.78 mm wall thickness.
- (e) One 500 MCM (or smaller), COREFLEX II RA90 XLPE FT4 cable.
- (f) One 24 AWG 100 pair (or smaller), CSA IWC FT4 telephone cable with PVC insulation.
- (g) One CAROL C1160 RG 11/U, Type CSA coaxial cable with PVC insulation.

• **3. Firestop System Components** – (Guide No. 40 U19.13). Type "A/D FIREBARRIER Silicone Sealant" caulk grade applied to a minimum depth of 25 mm on both sides of floor assembly. Additional material applied to form a nominal 6.4 mm crown around the circumference of the penetrating item.

A/D FIRE PROTECTION SYSTEMS INC.

**4. Pipe Insulation** (optional) (not shown) – Pipes (Items 2c and 2d), may be wrapped with 13-25 mm thick ULC labelled mineral wool or fibreglass pipe insulation (Guide No. 40 U18.15.13), with minimum 56 kg/m<sup>3</sup> density, jacketed on the outside with an all service jacket. Longitudinal joints sealed with factory-applied self-sealing lap tape. Transverse joints sealed with butt tape supplied with the products.

**5. Forming Material** (optional) – Mineral wool insulation fitted tightly against penetrating item and perimeter of opening. If left in place, will not affect assigned ratings.