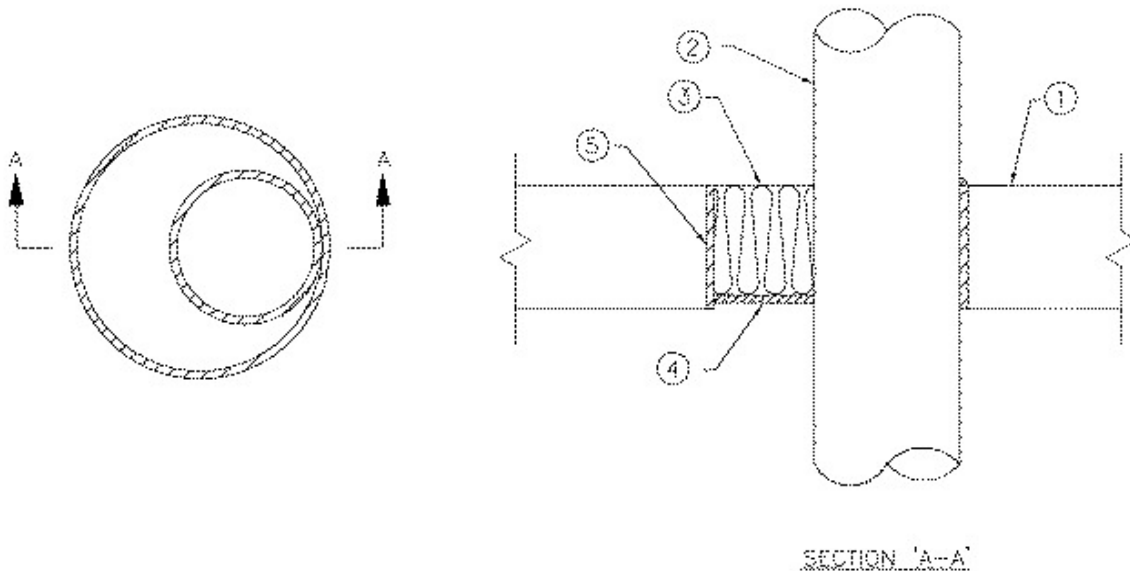


ULC System No. SP759  
November 23, 2004  
(For Horizontal or Vertical Separations)  
F and FH Ratings - 2 h  
FT and FTH Ratings - 0 h



1. **Floor or Wall Assembly** - Minimum 115 mm thick reinforced concrete floor or all of normal-density concrete or precast hollow core floor and/or hollow precast concrete masonry units having a fire resistance equal to or greater than that of the assembly. Wall may also be constructed of nominal 200 mm thick concrete block laid up with mortar. Maximum size of opening is 305 mm diameter.
2. **Pipe** - Nominal 204 mm OD (or smaller), Schedule 40 (or heavier) steel pipe, or cast or ductile iron pipe, nominal 204 mm OD, reliably supported on both sides of opening. Pipe installed such that the annular space is 0 (point contact) to 85 mm maximum.
3. **Batts and Blankets** - Mineral wool insulation, Type "A/D FIREBARRIER Mineral Wool", compressed 33% and installed within the opening to a minimum depth of 100 mm and recessed 13 mm from bottom or top surface of slab or both sides of wall.  
**A/D FIRE PROTECTION SYSTEMS INC**
4. **Firestop System Components** - (Guide No. 40 U19.13). Type "A/D FIREBARRIER Seal NS" sealant applied to bottom or top of mineral wool insulation to a minimum wet thickness of 5 mm. Additional material installed to form a crown of 5 mm around the circumference of the pipe at the point contact where the pipe contacts the edge of opening. For vertical installations, sealant to be applied symmetrically on both sides of wall.  
**A/D FIRE PROTECTION SYSTEMS INC**
5. **Pipe Sleeve** - (optional) - Nominal 305 mm OD, Schedule 40 (or heavier) steel pipe sleeve cast or grouted into floor or wall assembly flush with floor or wall surfaces.