

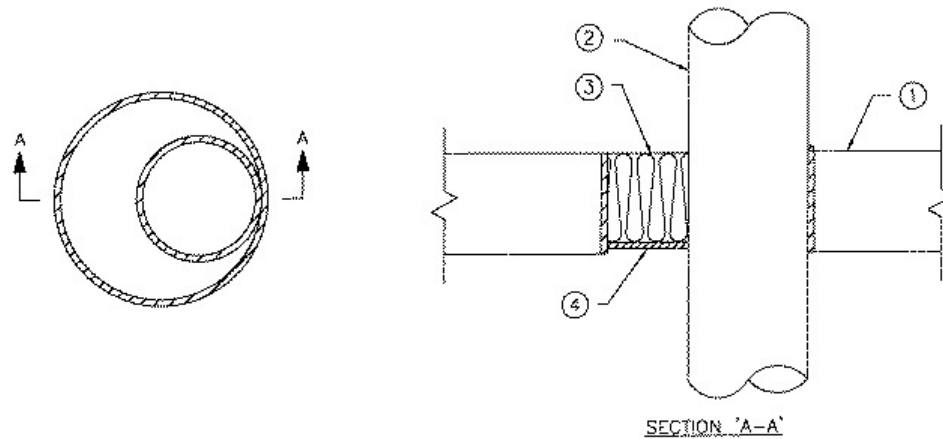
System No. SP760

June 26, 2007

(For Horizontal or Vertical Separations)

F and FH Ratings - 2 h

FT and FTH Ratings - 0 h



1. **Floor or Wall Assembly** — Minimum 115 mm thick reinforced concrete floor or all of normal-density concrete or precast hollow core floor and/or hollow precast concrete masonry units having a fire resistance equal to or greater than that of the assembly. Wall may also be constructed of nominal 200 mm thick concrete block laid up with mortar. Maximum size of opening is 305 mm diameter.

2. **Pipe** — Nominal 200 mm diameter (or smaller), Schedule 40 (or heavier) steel pipe, or cast or ductile iron pipe, reliably supported on both sides of opening. Pipe installed such that the annular space is 0 (point contact) to 85 mm maximum.

3. **Batts and Blankets** — Mineral wool insulation, Type "A/D FIREBARRIER Mineral Wool", compressed 33% and installed within the opening to a minimum depth of 100 mm and recessed 13 mm from bottom surface of slab or both sides of wall. When extended pipe sleeves (item 5) are used, mineral wool insulation compressed 33% and installed within the opening to a minimum depth equal to the length of the sleeve. Mineral wool recessed 13 mm from the bottom of the sleeve installed in a floor or 13 mm from both sides of the sleeve installed in a wall.

A/D FIRE PROTECTION SYSTEMS INC

4. **Firestop System Components** — XHJZC (Guide No. 40 U19.13). Type "A/D FIREBARRIER Silicone Sealant" caulk grade sealant applied to bottom or top of mineral wool insulation to a minimum thickness of 6.4 mm. For horizontal installations only, a minimum thickness of 6.4 mm of "A/D FIREBARRIER Silicone S/L" may be applied to top of mineral wool as an alternate to "A/D FIREBARRIER Silicone Sealant". Additional "A/D FIREBARRIER Silicone Sealant", caulk grade, installed to form a crown of 6.4 mm around the circumference of the pipe at the point contact where the pipe contacts the edge of opening. For vertical installations, sealant to be applied symmetrically on both sides of wall.

A/D FIRE PROTECTION SYSTEMS INC

5. **Pipe Sleeve** — (optional) - Nominal 305 mm diameter (or smaller), Schedule 40 (or heavier) steel pipe sleeve cast or grouted into floor or wall assembly flush with floor or wall surfaces. The ends of the sleeve may project a maximum of 44 mm beyond both surfaces of floor or wall.